

**SERIES 125/8800/8900**

**ROLLOVER PLOW  
OWNER'S MANUAL**



**1700 MAY STREET  
MARYSVILLE, KANSAS 66508  
(913) 562-5381**

# WARRANTY

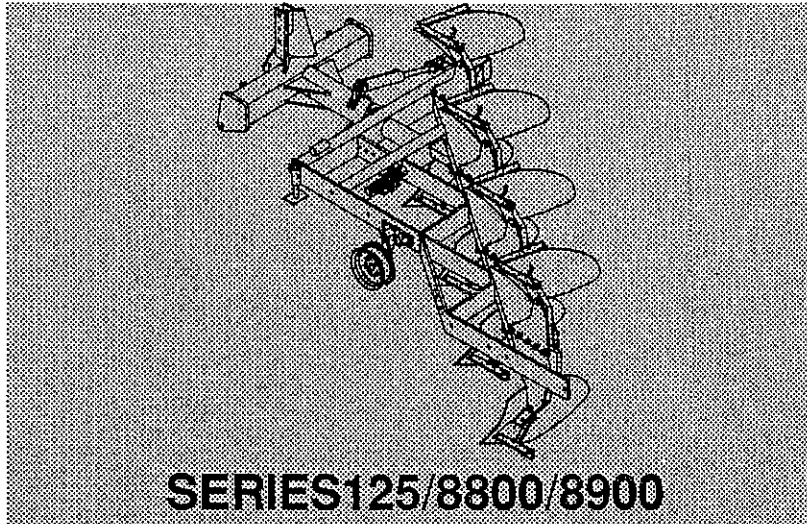
## MANUFACTURER'S GUARANTEE POLICY

### LANDOLL CORPORATION WARRANTY

LANDOLL warrants each new and unused LANDOLL machine, when properly assembled, adjusted and operated, to be free of defects in material and workmanship, in normal use and when properly serviced, for a period of twelve (12) months after date of delivery by the Dealer to the original retail purchaser. LANDOLL shall repair or replace, at its option, freight on board (f.o.b.) at its factory or designated DEALER location, any part or parts of such new and unused machine which shall have been reported in writing to LANDOLL within thirty (30) days from date of failure thereof and which LANDOLL inspection shall disclose to have been defective. Defective parts must be returned to the LANDOLL factory, freight prepaid. LANDOLL will not be liable for labor, transportation or any other charges resulting from replacement of a defective part. This warranty is void if any part not supplied by LANDOLL is used in assembly or repair, or if the machine has been altered, abused or neglected. LANDOLL repair parts are warranted for ninety (90) days from date of replacement or for the unexpired warranty period of the applicable LANDOLL machine, whichever period is longer. LANDOLL makes no warranty, whatsoever, as to purchased component parts and other trade accessories, except to the extent that such items are warranted by the manufacturer thereof. THIS WARRANTY IS EXCLUSIVE AND IN LIEU OF ALL OTHER WARRANTIES, WHETHER EXPRESSED, IMPLIED OR STATUTORY (INCLUDING WARRANTIES OF MERCHANTABILITY AND FITNESS FOR PURPOSE) AND LANDOLL SHALL NOT BE LIABLE FOR SPECIAL OR CONSEQUENTIAL DAMAGES OF ANY KIND ON ACCOUNT OF ANY LANDOLL PRODUCT.

NO EMPLOYEE OR REPRESENTATIVE IS AUTHORIZED TO CHANGE THIS WARRANTY, VERBALLY OR IN WRITING, OR GRANT ANY OTHER WARRANTY.

LANDOLL CORPORATION, WHOSE POLICY IS ONE OF CONTINUOUS IMPROVEMENT, RESERVES THE RIGHT TO MAKE CHANGES WITHOUT OBLIGATION TO MODIFY PREVIOUSLY PRODUCED EQUIPMENT.



**ROLLOVER PLOW  
OWNER'S MANUAL**

**PURCHASED FROM:** \_\_\_\_\_ **DATE** \_\_\_\_/\_\_\_\_/\_\_\_\_

**ADDRESS:** \_\_\_\_\_  
\_\_\_\_\_  
\_\_\_\_\_

**PHONE NO:** \_\_\_\_\_ **SERIAL NO:** \_\_\_\_\_



# CONTENTS

---

<b>HOW TO USE THIS MANUAL</b>	<b>1-1</b>
-------------------------------	------------

---

<b>SPECIFICATIONS</b>	<b>2-1</b>
-----------------------	------------

---

<b>SAFETY PRECAUTIONS</b>	<b>3-1</b>
---------------------------	------------

---

<b>ROLLOVER PLOW ASSEMBLY</b>	<b>4-1</b>
-------------------------------	------------

---

SET THE FRAME ONTO STANDS. . . . .	4-2
ATTACH THE SHANK SIDE PLATES TO THE FRAME. . . . .	4-2
ATTACH THE SHANKS TO THE SHANK SIDE PLATES. . . . .	4-2
ATTACH THE HYDRAULIC CYLINDER. . . . .	4-3
ATTACH THE PLOW BOTTOMS. . . . .	4-3
ATTACH THE GAUGE WHEELS. (8800/8900 MODELS ONLY) . . . . .	4-4
ATTACH EXTENSION TO PLOW (OPTIONAL ON 8800/8900 MODELS ONLY). . . . .	4-5
TRASH COVER BOTTOM ATTACHMENTS (OPTIONAL) . . . . .	4-5
COULTER ATTACHMENTS (OPTIONAL) . . . . .	4-6

<b>ATTACHMENT TO PLOW</b>	<b>5-1</b>
---------------------------	------------

---

PREPARING THE TRACTOR . . . . .	5-1
ATTACHING PLOW TO TRACTOR . . . . .	5-1
LUBRICATION . . . . .	5-1

<b>PLOW OPERATION</b>	<b>6-1</b>
-----------------------	------------

---

FIELD ADJUSTMENTS . . . . .	6-1
-----------------------------	-----

<b>MAINTENANCE &amp; TROUBLESHOOTING</b>	<b>7-1</b>
--	------------

---

TROUBLESHOOTING THE ROLLOVER PLOW . . . . .	7-1
MISCELLANEOUS MAINTENANCE . . . . .	7-2

<b>ILLUSTRATED PARTS LIST</b>	<b>8-1</b>
-------------------------------	------------

---

<b>WARRANTY</b>	<b>Inside Front Cover</b>
-----------------	---------------------------

---



Faint, illegible text at the top of the page.

Faint, illegible text in the upper middle section.

Faint, illegible text in the middle section.

Faint, illegible text in the middle section.

Faint, illegible text in the middle section.

Faint, illegible text in the middle section.

Faint, illegible text in the middle section.

Faint, illegible text in the middle section.

Faint, illegible text in the middle section.

Faint, illegible text in the middle section.



Faint, illegible text in the middle section.

Faint, illegible text in the middle section.

Faint, illegible text in the middle section.

Faint, illegible text in the middle section.

Faint, illegible text in the middle section.

Faint, illegible text in the middle section.

Faint, illegible text in the middle section.

Faint, illegible text in the middle section.

Faint, illegible text in the middle section.

Faint, illegible text in the middle section.



# HOW TO USE THIS MANUAL

The Landoll Rollover Plow is a quality product designed to give years of trouble free performance. by following each section of this manual, your system will perform as designed for You and Your operation.

This manual includes eight major sections:

## SECTION 1

. . . is basic instructions, for your information, on the use of this manual.

## SECTION 2

. . . gives product specifications. These specifications supply lengths and measures for your equipment. Torque specifications state, in foot-pounds, how tight the various bolts used on the equipment should be when assembled.

## SECTION 3

. . . contains safety precautions. These must be strictly observed to prevent accidents, injury, or equipment damage.

## SECTION 4

. . . contains assembly instructions for your Rollover Plow. When these procedures are correctly followed, your plow should provide you years of trouble-free operation and service.

**NOTE: IF THE EQUIPMENT IS IMPROPERLY ASSEMBLED, THE WARRANTY IS VOID.** If you have any questions, please contact your LANDOLL Dealer, or write:

**LANDOLL CORPORATION**

**1700 MAY STREET**

**MARYSVILLE, KS 66508**

**OR PHONE:**

**(785)562-5381**

**1-800-HAULLOLL**

**(1-800-428- 5655)**

**FAX NO.: (785) 562-4893**

## SECTION 5

. . . instructs how to operate your equipment before using it.

## SECTION 6

. . . describes adjustments needed, It also gives practical advice for the care and maintenance of your LANDOLL equip-

## HOW TO USE THIS MANUAL

ment. Drawings in this section locate adjustment points on the equipment.

**NOTE:** Proper adjustment, regular maintenance and observing recommended safety precautions will, in most cases, extend the useful life of your LANDOLL product for years.

### SECTION 7

... is a list of common problems and possible causes and actions for troubleshooting the Rollover Plow. If you cannot solve your problem using this list, please feel free to contact your Landoll Dealer.

### SECTION 8

... is the Illustrated Parts List. Refer to this section when ordering Landoll replacement parts, as needed. The number in the balloon on the illustration points to one or more parts with the same number in the parts list, usually on the facing page. Using part numbers, when ordering parts, will make it easier to identify those parts and ensure the proper part is replaced. Order parts from your Landoll dealer or call the **Landoll Parts Distribution Center** at:

**FOR REPLACEMENT PARTS:**

1-800-423- 4320

FAX NO.: (785) 562-4892

## 1-1 SAFETY NOTES



Safety precautions are always identified in this manual and on your equipment with the **INTERNATIONAL SAFETY ALERT SYMBOL**:





**ALWAYS READ THE SAFETY PRECAUTIONS IN THE MANUAL BEFORE DOING ANYTHING NEAR THIS SYMBOL ON YOUR EQUIPMENT.** Safety precautions always begin with one of three words in **bold print** and in **CAPITAL letters**:

**DANGER**

... means **A LIFE THREATENING SITUATION EXISTS** in the immediate area of this label. **DEATH CAN OCCUR** in the immediate area of this label if the information on this label is not correctly followed or should an accident occur near this label on the equipment.

**WARNING**

... means **SERIOUS INJURY AND POSSIBLY DEATH CAN OCCUR** in the immediate area of this label. Injury or death is likely if safety measures or instructions provided by this label on the equipment are not properly followed.

**CAUTION**

... means **serious equipment or other property damage can occur** near this label. Damage can occur to the equipment if instructions or safety measures given by this label are not properly followed.

## 1-2 REFERENCES IN THIS MANUAL

---

... see Figure 4-3

The text in this manual often asks you to look at *FIGURES* and *TABLES*. These may not always be on the same page as the reference. Sometimes they are in a different part of the manual. For example, "**see Figure 4-3**" means look at the *third figure in Section 4*. **PAGE NUMBERS ARE NEVER REFERENCED.** Please note that drawings are, for the most part, approximate, as equipment is subject to change after the manual is printed.

## 1-3 WARRANTY

---

The **Warranty Registration Card** is located inside the front cover of the manual. It is postage paid if mailed within the United States. **Please fill it out and mail it within fifteen (15) days** of purchase. *The Warranty* is printed inside the front cover.

HOW TO USE THIS MANUAL

**1-4 COMMENTS! QUESTIONS?**

---

Address all comments or questions on this publication to:

**LANDOLL CORPORATION  
1700 MAY STREET  
MARYSVILLE, KANSAS 66508  
ATTENTION: PUBLISHING - DEPT. 73**

**NOTES:**

---

# SPECIFICATIONS

## 2-1 STANDARD MODELS

MODEL NUMBER	WORKING WIDTH	NO. OF BOTTOMS	CATEGORY	APPROX. WEIGHT (LBS.)
2125-IF*	32"	2-16"	II/III	1251
3125-IF	48"	3-16"	II/III	1655
4125-IF	64"	4-16"	II/III	2101
8833-IF	54"	3-18"	II/III	2766
8834-IF	72"	4-18"	II/III	3505
8844-IF	72"	4-18"	II/III	3570
8844-OL**	72"	4-18"	II/III	3768
8845-IF	90"	5-18"	II/III	4309
8845-OL	90"	5-18"	II/III	4491
8855-OL	90"	5-18"	II/III	4463
8856-OL	108"	6-18"	II/III	5186
8866-OL	108"	6-18"	II/III	5167
8866-OL	108"	6-18"	II/III	5167
8856-OL	108"	6-18"	II/III	5186
8866-OL	108"	6-18"	III	5167
8867-OL	126"	7-18"	II/III	5890
8944-IF	80"	4-20"	II/III	5577
8945-IF	100"	5-20"	II/III	6800
8955-OL	100"	5-20"	III/IV	6998
8956-OL	120"	6-20"	III/IV	8232
8966-OL	120"	6-20"	III/IV	8192
8967-OL	140"	7-20"	III/IV	9427

\* IF - IN-FURROW; \*\* OL - ON-LAND



### WARNING

VEHICLE LOADED WITH PLOW MAKES WIDE TURNS. WHEN USED ON PUBLIC ROADS, REDUCE SPEED WELL IN ADVANCE OF TURNING.

## 2-2 ASSEMBLY SPECIFICATIONS

---

<b>TRACTORS</b>	Any tractor having adequate horsepower and hydraulic equipment.
<b>HITCHES</b>	Model 125 Series — Category II - 3-Point & Quick Attaching Coupler; Category III — 3-Point Coupler Only Model 8800 (All) — Category II/III - 3-Point & Quick Attaching Coupler Model 8900-IF — Category II/III - 3-Point & Quick Attaching Coupler Model 8900-OL — Category III/IV - 3-Point & Quick Attaching Coupler
<b>BEAM TYPE</b>	Shear-pin trips
<b>HYDRAULIC (ROLL-OVER) CYLINDER</b>	2125 Series - 2 x 8 — double acting. 8800/8900/3125/4125 Series — 3 x 8 double acting w/flow restrictor.
<b>GAUGE WHEEL</b>	Available only for Models 8800/8900.
<b>COVERING EQUIPMENT</b>	Optional bolt-on Trash Cover.
<b>BEAM FEET BRACES</b>	Bolt-on brace to tie together top and bottom side plates for extra tough soil conditions.
<b>COULTERS</b>	Optional equipment for all models featuring 20" rippled coulter.
<b>BOTTOMS</b>	125 Series — 16" General Purpose 8800 Series — 18" Stubble, Super Chief, or Slat. 8900 Series — 20" General Purpose.
<b>TRASH CLEARANCE</b>	125 Series — 26" 8800 Series — 30" 8900 Series — 32"
<b>1-BOTTOM EXTENSION</b>	Available only for Models 8800/8900.

GENERAL TORQUE SPECIFICATIONS (REVISED 9-87)																							
USE THE FOLLOWING TORQUES WHEN SPECIAL TORQUES ARE NOT GIVEN.																							
NOTE: These values apply to fasteners as received from supplier, dry, or when lubricated with normal engine oil. They do not apply if special graphited, or moly-disulphide greases, or other extreme pressure lubricants are used/ This applies to both UNF and UNC threads.																							
SAE Grade No.	Bolt head identification marks as per grade. NOTE: Manufacturing Marks will vary.	2			5			8*															
		Torque		Torque		Torque		Torque		Torque													
Inches	Bolt Size	Foot Pounds		Newton-Meters		Foot Pounds		Newton-Meters		Foot Pounds		Newton-Meters											
		Min.	Max.	Min.	Max.	Min.	Max.	Min.	Max.	Min.	Max.	Min.	Max.										
1/4	6.35	5	6	7	9	9	11	12	15	15	12	15	20										
5/16	7.94	10	12	14	16	17	20	23	28	24	29	32	39										
3/8	9.53	20	23	27	31	35	42	48	57	45	54	61	73										
7/16	11.11	30	35	41	47	54	64	73	87	70	84	95	114										
1/2	12.70	45	52	61	70	80	96	108	130	110	132	149	179										
9/16	14.29	65	75	88	102	110	132	149	179	160	192	217	260										
5/8	15.88	95	105	129	142	150	180	203	204	220	264	298	358										
3/4	19.05	150	185	203	250	270	324	366	439	380	456	516	618										
7/8	22.23	160	200	217	271	400	480	542	651	600	720	814	976										
1	25.40	250	300	339	406	580	696	786	944	900	1080	1220	1464										
1-1/8	25.58											800	880	1085	1193	1280	1440	1736	1953				
1-1/4	31.75											1120	1240	1519	1681	1460	1680	1980	2278	2380	2720	3227	3688
1-3/8	34.93											1940	2200	2631	2983	3160	3560	4285	4827				
1-1/2	38.10																						
NOTES:	1. When hardware is plated, reduce torque values by 25%. 2. When locknuts are use, increase torque value by 25%. 3. When plated hardware is used w/locknuts, use torque value chart.																						
		* Thick nuts must be used with Grade 8 bolts.																					

TABLE 2-1 BOLT TORQUE SPECIFICATIONS

**NOTES:**

---



The following Safety Precautions are important to remember when working with your plow. Serious injury, death, or severe damage can result from neglecting safe operation and maintenance practices. Be alert to the safety alert symbol, shown on the left. Read, understand, and follow any instructions given wherever this symbol is displayed — on the machine or in this manual.



---

## DANGER

DO NOT STAND UNDER OR NEAR THE PLOW DURING OPERATION. SERIOUS INJURY OR DEATH CAN OCCUR IF STRUCK BY THE FORCE OF A PLOW BOTTOM WHILE IT IS ROLLING OVER, OR IF STRUCK BY A MOVING PLOW.



---

## DANGER

NEVER ALLOW ANYONE TO RIDE ON THE EQUIPMENT AT ANY TIME. ALLOWING A PERSON TO RIDE ON THE ROLLOVER PLOW MAY RESULT IN SERIOUS PERSONAL INJURY OR DEATH OF THAT PERSON.



---

## DANGER

ALL HYDRAULICALLY ELEVATED EQUIPMENT MUST BE BLOCKED OR LOWERED TO THE GROUND WHEN SERVICING OR WHEN EQUIPMENT IS IDLE, TO PREVENT ACCIDENTAL LOWERING. FAILURE TO TAKE MEASURES TO PREVENT ACCIDENTAL LOWERING MAY RESULT IN SERIOUS PERSONAL INJURY OR DEATH.



---

## WARNING

USE A MECHANICAL LIFTING DEVICE (HOIST, FORKLIFT, ETC.) TO RAISE THE FRAME ONTO STANDS. (USE AT LEAST THREE STANDS, DEPENDING ON THE MODEL PLOW AND THE NUMBER OF PLOW BOTTOMS TO BE ATTACHED.) THE WEIGHT OF THE FRAME CAN CAUSE PERSONAL INJURY. ADDING WEIGHT TO THE FRAME INCREASES THE SEVERITY OF ANY INJURY THAT MAY BE SUSTAINED. DO NOT CRAWL UNDER THE FRAME OF THE PLOW. DO NOT REMOVE LIFTING DEVICE UNTIL PLOW IS COMPLETELY ASSEMBLED. THE WEIGHT OF THE UNIT IS UNBALANCED UNTIL THE ENTIRE UNIT IS ASSEMBLED.



---

### WARNING

IMPROPER FRONT WHEEL BALLAST CAN CAUSE THE TRACTOR TO TIP OR FLIP. THIS CAN CAUSE DEATH, SEVERE INJURY, OR SERIOUS DAMAGE TO THE EQUIPMENT IF NOT PROPERLY ATTENDED. SEE YOUR TRACTOR'S OPERATION MANUAL FOR ADDING BALLAST, AND THE OPERATION SECTION OF THIS MANUAL.



---

### WARNING

VEHICLE LOADED WITH PLOW MAKES WIDE TURNS. WHEN USED ON PUBLIC ROADS, REDUCE SPEED WELL IN ADVANCE OF TURNING.



---

### WARNING

BEFORE OPERATING THE PLOW, CHECK THE CLEARANCE BETWEEN PLOW BOTTOMS, COULTERS, ETC., AND ANY PART OF THE TRACTOR, INCLUDING — THE CAB, ROOF, TIRES, & HOSES. INADEQUATE CLEARANCE OF MOVING PARTS CAN RESULT IN PERSONAL INJURY OR MAJOR PROPERTY DAMAGE.

ALSO, MODIFICATIONS MADE TO THE TRACTOR, OTHER THAN THOSE SUGGESTED BY THE MANUFACTURER, CAN RESULT IN INTERFERENCE BETWEEN THE PLOW AND THE TRACTOR. CHECK CLEARANCES BEFORE OPERATING A TRACTOR THAT HAS BEEN MODIFIED.



---

### CAUTION

PROPER TIRE INFLATION IS REQUIRED. OVER-INFLATION CAN CAUSE THE WHEEL ON THE PLOW TO EXPLODE. CHECK THE PROPER TIRE INFLATION SET BY THE TIRE MANUFACTURER BEFORE INFLATION.



---

### CAUTION

ALL HYDRAULIC SYSTEMS MUST BE BLED OF AIR BEFORE INSTALLATION ON UNIT — LAY CYLINDER ON FLOOR WITH PORTS FACING UP, FULL CYCLE CYLINDER 3 OR 4 TIMES TO BLEED AIR. DO NOT HOLD CYLINDER WHILE CYCLING IT.

---

### IMPORTANT!

Whenever transporting farm implements on public roads, it is the responsibility of the operator to abide by state and local laws concerning:

- wide loads,
- speed,
- safety emblems, and
- safety lighting equipment.

To prevent tipping of the tractor, drive at safe speeds. Particularly:

- when rounding corners,
- crossing rough ground or at railroad crossings, and
- on hillsides.



It is very important that your new rollover plow be properly lubricated before use. Illustrations are provided in this section to show proper assembly and manual terminology. Any references to left or right in this manual are determined standing at the rear of the machine looking toward the front of the machine. Remove paint from grease fittings and replace any that are damaged or missing. Be sure to replace bolts, clips, etc., from the same place where they were removed. To insure frame alignment, insert all bolts, leaving the nuts loose until instructed to tighten bolts in the procedures. Use lock-washers or flat washers where called for. Spread all cotter pins.

After completion of final assembly, **tighten all nuts evenly** to prevent misalignment, distortion, or binding. Tighten all bolts and nuts to the recommended torques shown in **Table 2-1**.



## DANGER

RE-READ AND HEED ALL SAFETY PRECAUTIONS IN SECTION THREE BEFORE ASSEMBLING THE ROLLOVER PLOW. SERIOUS INJURY OR DEATH CAN RESULT FROM MISASSEMBLED EQUIPMENT WHERE, SAFETY STANDARDS ARE IGNORED.

### 4-1 Set the Frame onto Stands.

4-1.1 Use a hoist, forklift, etc., to raise the number of plow bottoms to be attached. (Use at least three stands, depending on the model plow and

### 4-2 Attach the Shank side plates and Beam Feet Brace to the Frame.

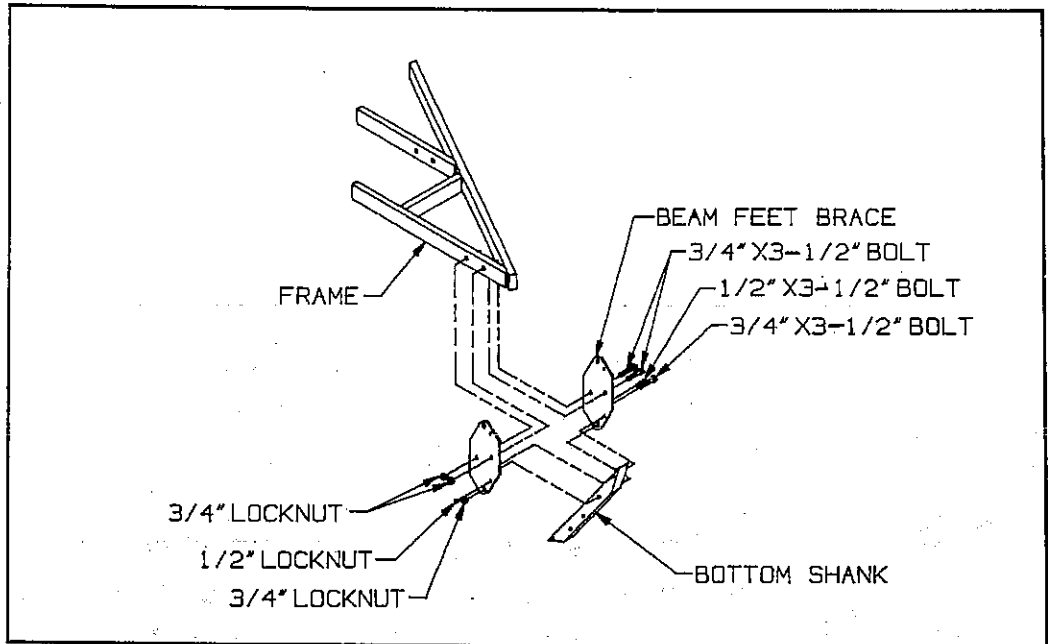
See  
Figures  
4-1 & 4-2.

4-2.1 125-SERIES PLOWS — Attach a Beam Feet Brace to both sides of the frame using two 3/4" x 3-1/2-inch bolts and locknuts.

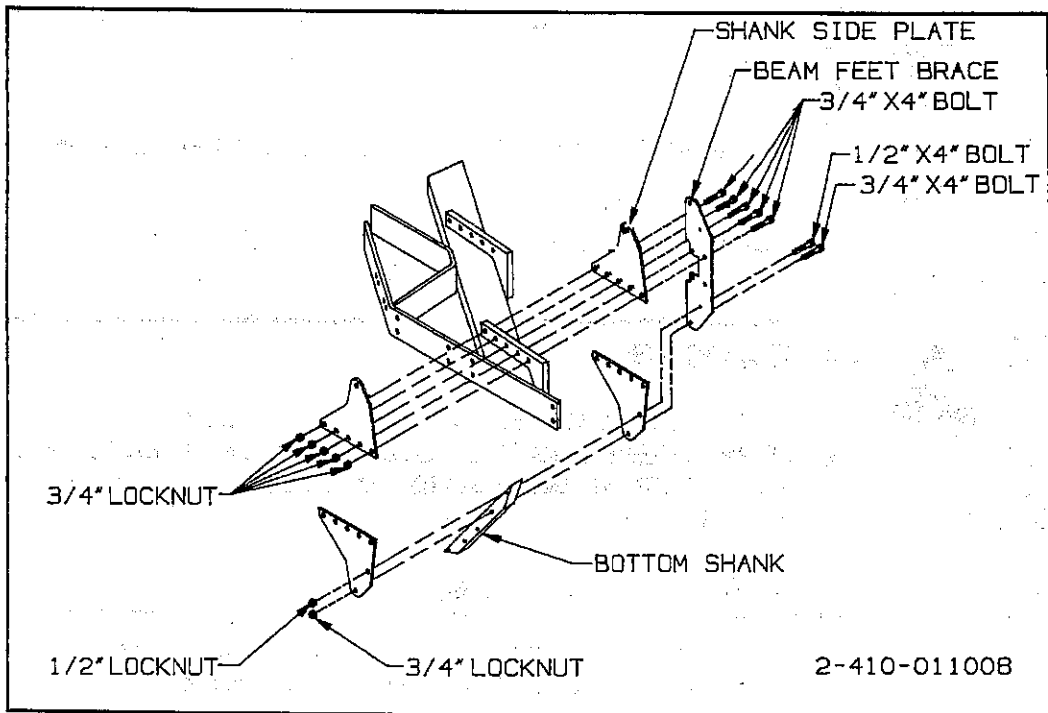
4-2.2 8800/8900 SERIES PLOWS — Attach Shank Side Plates to both sides of frame brackets. Use one beam feet brace on each frame bracket and five 3/4" x 4-inch bolts and locknuts.

**ROLLOVER PLOW ASSEMBLY**

**Figure 4-1 Shank Side Plate & Shank Attached - 125**

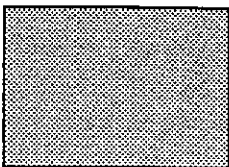


**Figure 4-2 Shank Side Plate & Shank Attached - 8800/8900**



2-410-011008

**4-3 Attach the Shanks.**



**4-3.1** Locate the bottom shank between beam feet Braces. Secure with one 3/4-inch x 3-1/2-inch bolt (125 series), or 3/4" x 4" x 4" bolt (8800/8900 series) through the lowest hole in the Shank side plates, and

3/4" locknut. Position Shank to insert 1/2-inch grade 2 shear bolt through Shank side plates. Repeat the operation for the top shank. Tighten all bolts.

4-4 Attach the Hydraulic Cylinder.



**DANGER**

STAND CLEAR OF PLOW BOTTOMS DURING OPERATION. CHARGE HYDRAULIC CYLINDER WITH HYDRAULIC OIL BEFORE ATTEMPTING TO ROLL-OVER PLOW.



**CAUTION**

ALL HYDRAULIC SYSTEMS MUST BE BLED OF AIR AFTER INSTALLATION ON UNIT — LAY CYLINDER ON FLOOR WITH PORTS FACING UP, FULL CYCLE CYLINDER 3 OR 4 TIMES TO BLEED AIR. DO NOT HOLD CYLINDER WHILE CYCLING IT.

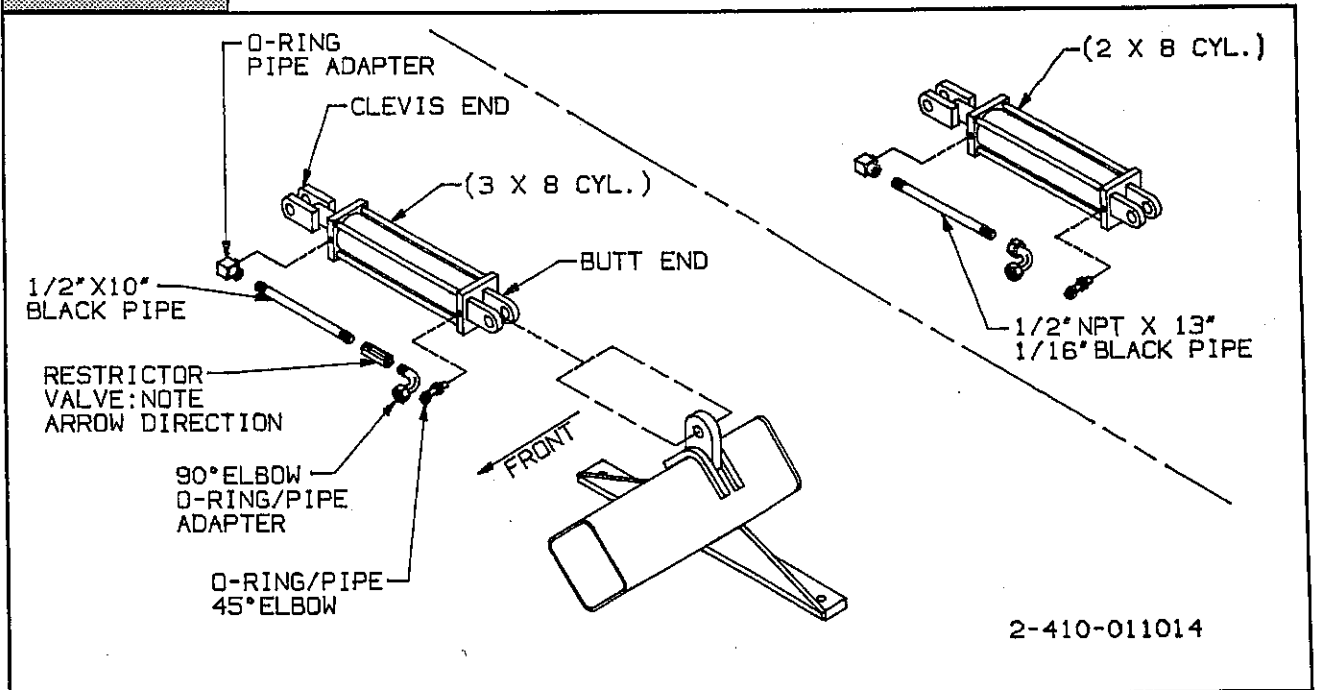


Figure 4-3 Hydraulic Cylinder Mounts

See Figure 4-3

4-4.1 Position hose fittings to point them toward the front of the plow. Attach the butt end of the Hydraulic Cylinder to the Cylinder Mount on the hitch.

4-4.2 Attach the Clevis end of the hydraulic cylinder to the cylinder mount on the frame. Use a Clevis pin and two hair pins at each end of the cylinder.

4-5 Attach the Plow Bottoms.

See Figure 4-4

4-5.1 The Plow Bottoms are stamped "LH" for left-hand bottom and "RH" for right-hand bottom. Each bottom attaches to the Shank using two 5/8" x 3" bolts,

one 5/8-inch x 3-inch plow bolt, lockwashers and nuts.

**NOTE:** Bolt sizes specified may vary between different models of the plow.

## ROLLOVER PLOW ASSEMBLY

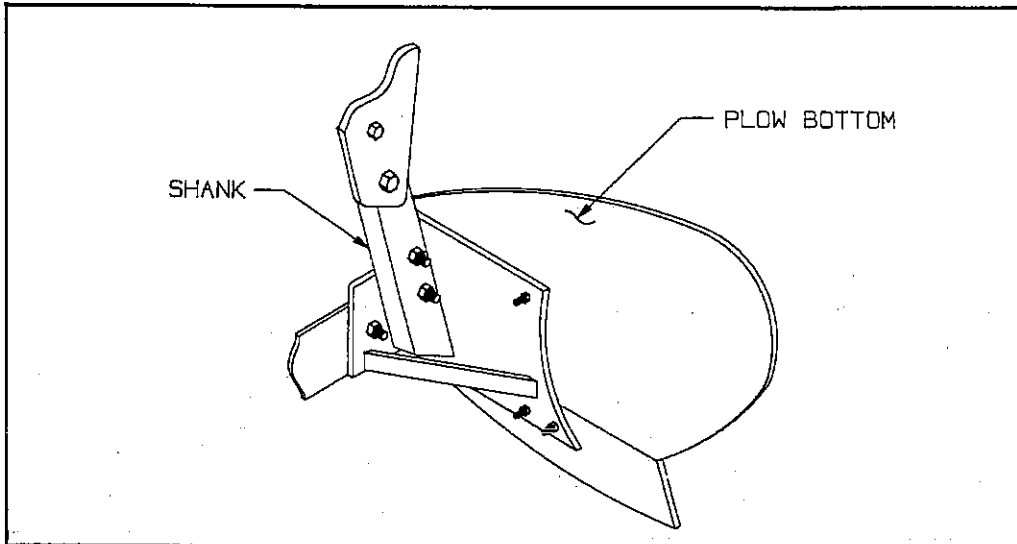


Figure 4-4 Plow Bottom Attachment

**NOTE:** If Trash Boards are to be used, attach them at the same time as the plow bottoms (see Step 4-8).

### 4-6 Attach the Gauge Wheels. (8800/8900 Models Only)

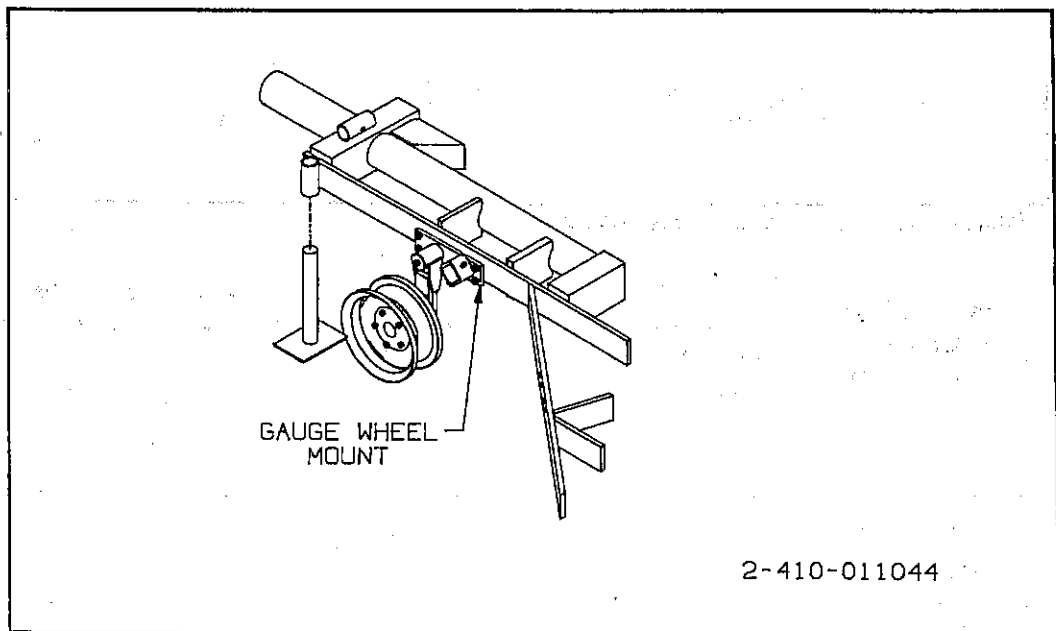
See Figure 4-5

**NOTE:** A 7.60x15", 8-ply implement rib tread tire is recommended for use with a 15x6" rim. Inflate tire to manufacturer's recommended pressure.

4-6.1 The Gauge Wheel Arm assembly mounts to the frame using four 3/4-inch x 2-1/2-inch bolts, lockwashers, and nuts. The Gauge wheel can be mounted on the frame as shown in Figure 4-5 or at the rear of the plow.

4-6.2 Install rim with tire to hub. Tighten wheel bolts evenly to assure proper alignment of wheel.

**NOTE:** The gauge wheel is adjusted at the time of the test run through the field. See "Field Adjustments" in Section 6, "Plow Operation" to adjust the gauge wheel.



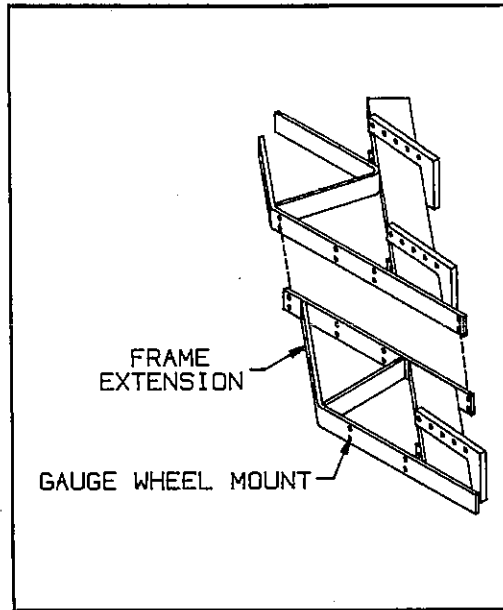
2-410-011044

Figure 4-5 Gauge Wheel Mounted to Frame

4-7 Attach extension to plow (Optional on 8800/8900 Models Only).

Figure 4-6 Attach Frame Extension

See Figure 4-6



4-7.1 One Bottom Extension can be added to 8800/8900 model plows, to increase the number of plow bottoms. Use six 3/4-inch x 2-1/2-inch bolts, lockwashers, and nuts.

4-7.2 Attach the plow bottoms per Steps 4-2 through 4-5.

4-8 Trash Cover Bottom Attachments (Optional)

See Figure 4-7

4-8.1 The trash cover mounts onto the shank using a Trashboard Bracket. Use the middle two nuts and bolts on the shank, the same ones used to attach the plow bottom to the shank, to attach the Trashboard Bracket.

4-8.2 The trashboard is mounted to the bracket with two 7/16" x 1-1/4" plow bolts, flat washers and nuts.

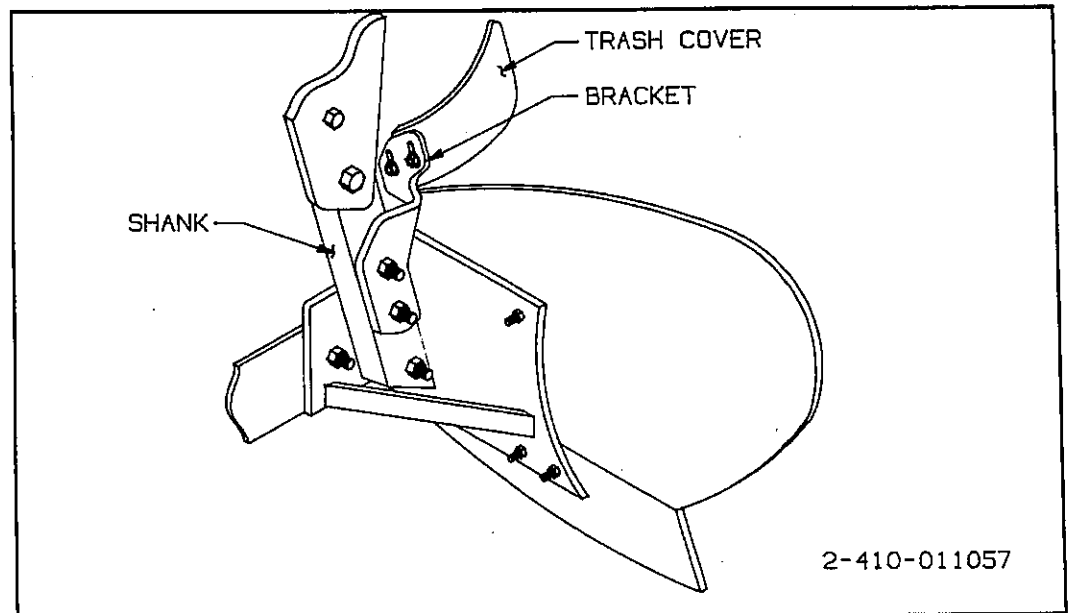


Figure 4-7 Trash Cover

2-410-011057

4-9 Coulters Attachments (Optional)



**DANGER**

COULTER BLADES ARE SHARP. DO NOT ALLOW BLADES TO ROLL OVER OR FALL ONTO ANY PART OF BODY. DO NOT ALLOW WRENCHES TO SLIP WHEN WORKING NEAR COULTER BLADES. DO NOT CLIMB OVER MACHINE ABOVE COULTER BLADES WHEN THERE IS A POSSIBILITY OF SLIPPING AND FALLING ON THEM. SERIOUS INJURY OR DEATH CAN RESULT FROM CARELESSNESS WHILE WORKING NEAR COULTER BLADES.

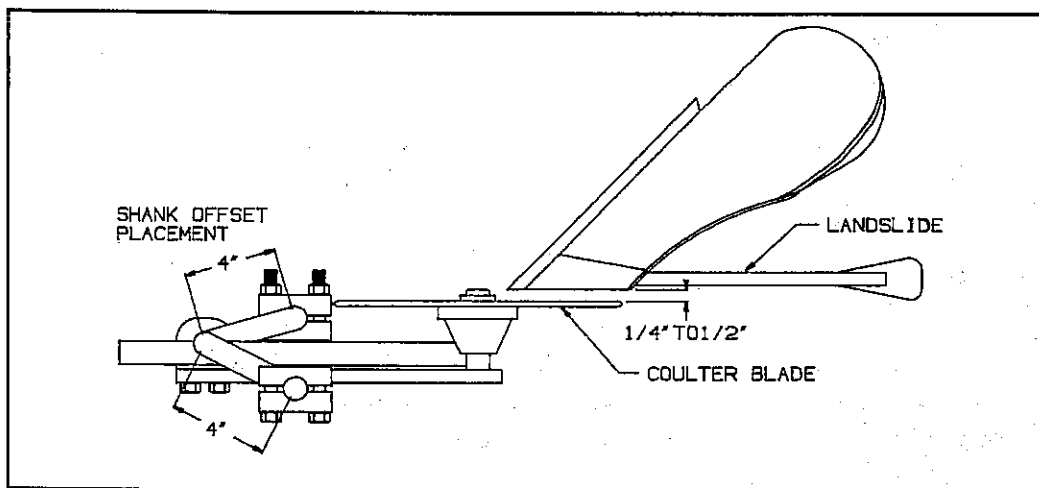


Figure 4-8 Coulters Assembly - Top View

**NOTE:**  
Different models of the Roll-over Series Plows use different bolt lengths.

4-9.1 One coulters blade assembly can be attached to the Rollover Plow frame for each plow bottom. The coulters can be attached in one of four configurations (see Figures 4-8 thru 4-12).

*coulters shank* into the shank clamps and pivot the coulters shank to the angle needed for in-furrow use. See Steps 4-9.6.b and 4-9.6.c to complete this setup.

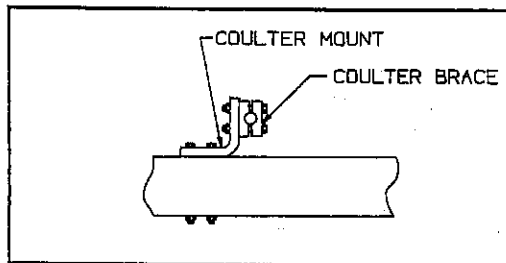


Figure 4-9 2-Bolt Mount w/One Coulters

4-9.2 Two-bolt Mount (One Coulters - In-furrow use only - see Figure 4-9) — Attach the *mounting bracket* to the frame with 5/8" bolts and nuts. Attach one pair of *shank clamps* to the mounting bracket, loosely, with 5/8" bolts and nuts. Set the

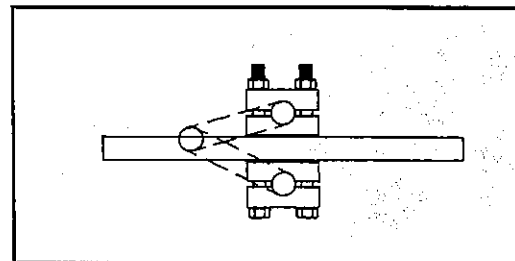


Figure 4-10 2- Bolt Mount

4-9.3 Two-bolt Mount (see Figure 4-10) — Two pairs of *shank clamps* are set on opposite sides of the frame member. One 6-1/2" x 5/8" bolt and one 5/8" nut is used on each side of the <sup>2-110-011016</sup> clamp. See Step 4-9.6 (a, b, and c) to complete this setup.

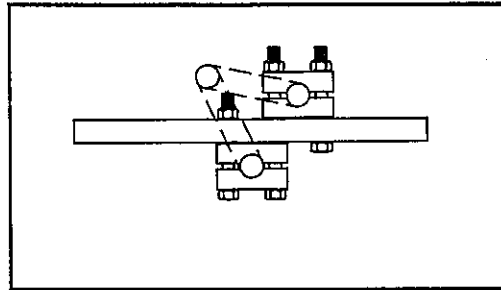


Figure 4-11 3- Bolt Mount

**4-9.4 Three-bolt Mount (see Figure 4-12)** — Two pairs of shank clamps are offset and overlapping on opposite sides of the frame member. They are attached with one 5/8" x 6-1/2" bolt, in the center of the frame, two 5/8" x 3-1/2 (on 8800/8900 models) or 4-1/2 (on 125 models) bolts on both sides, and three 5/8" nuts. See Step 4-9.6 (a, b, and c) to complete this setup.

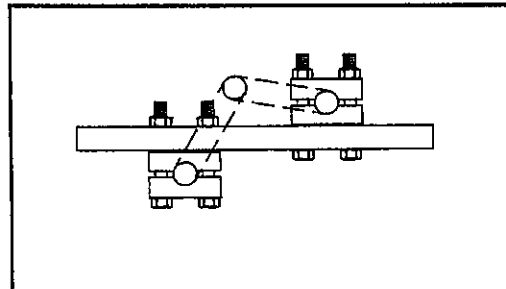


Figure 4-12 4-Bolt Mount

**4-9.5 Four-bolt Mount (see Figure 4-12)** — Two pairs of shank clamps are offset and separate on opposite sides of the frame member. They are attached with four 5/8 in. x 3-1/2 (on 8800/8900 models) or 4-1/2" (on 125 models) bolts and nuts. See Step 4-9.6 (a, b, and c) to complete this setup.

**4-9.6** To install the couler assemblies (see Figure 4-13):

a. Insert the couler shank assembly into the shank clamps. Position the blade about 1/4" outside and parallel to the landslide. To do this, pivot the couler shank, as shown in Figure 4-8.

b. Set coulers deep enough to cut trash (about 3"). This may change due to the operating depth of the bottoms.

c. Tighten the nuts to the torque recommended in Table 2-1.

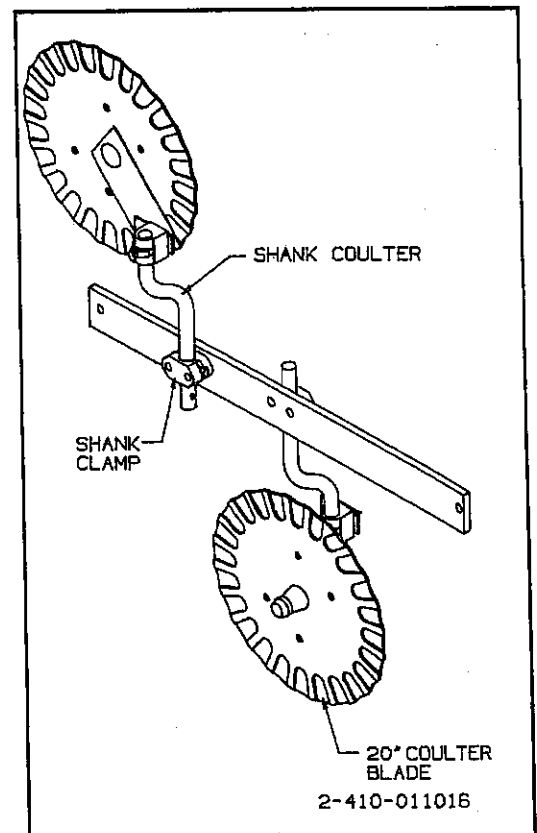


Figure 4-13 Assembled Coulers - Side View

**NOTES:**

1. Set couler 1/2" to 3/4" to the land side of plow bottom.
2. Make sure couler clears plow shin when it swings.
3. Final adjustment may be necessary at time of Field Operation.

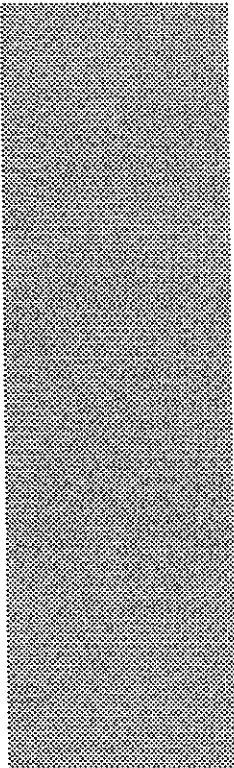
**ROLLOVER PLOW ASSEMBLY**

**NOTES:**

---



## 5-1 PREPARING THE TRACTOR



5-1.1 Set the inside dimensions of the tractor rear wheels to correspond with the width of the plow. For In-Furrow plows:

<u>Width of Cut</u>	<u>Inside-to-Inside Rear Wheel Spacing</u>
16"	60" to 62"
18"	64" to 66"
20"	68" to 70"

5-1.2 If the tractor has wide-track front wheels and you are using an in-furrow plow, set the front wheels to conform with the rear wheel settings.

5-1.3 Add enough weight to the front end of the tractor to keep it safely in the ground.

5-1.4 Add enough rear wheel weights to get the most traction for your tractor's horsepower rating. To determine the correct tractor weight on the rear wheels, watch the tire tracks:

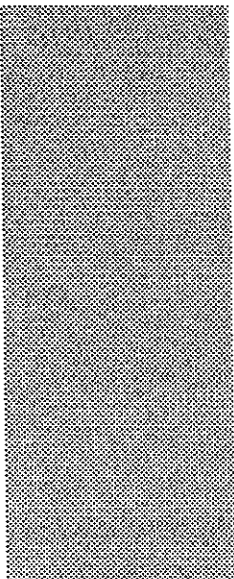
a. Tread marks will be barely visible if not enough weight has been added;

b. Tread marks will be clear-cut if too much weight has been added;

c. Soil between the lugs will be broken or shifted slightly at proper weight.

5-1.5 Refer to the Tractor's Operator Manual for complete operating instructions.

## 5-2 ATTACHING PLOW TO TRACTOR



5-2.1 Set tractor on level ground to make sure lift links are even. Adjust the top link to level the plow front-to-back.

5-2.2 Set the lower lift arms equally. **For on-land plows:** set the plow frame parallel (side-to-side) with the hitch. **For in-furrow plows:** adjust the proper angle in the field (see Section 6). Use the

washers and 3/4-inch cap screws on the hitch to make the adjustments.

5-2.3 Set lift links to get most lift from your tractor.

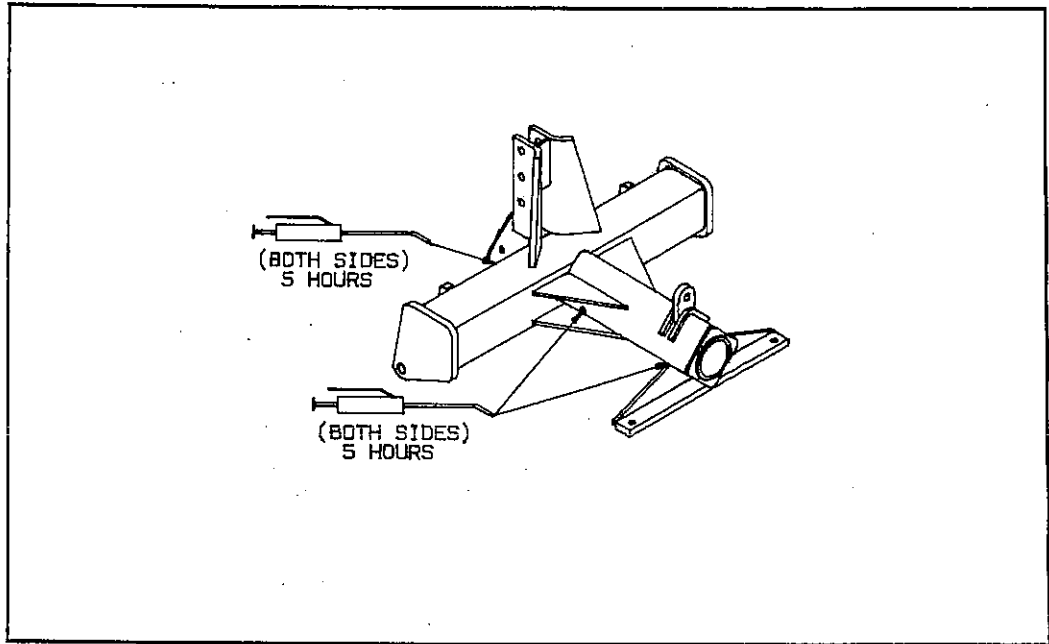
5-2.4 Remove sway blocks from tractor.

5-2.5 The plow may work better when hitched directly to the tractor without a quick attachment coupler.

**NOTE:** All roll-over plows need extra clearance for roll-over action. Check for adequate clearance for plow rotation between tractor cab and front bottom or coulters.

## ATTACHMENT TO PLOW

Figure 5-1 Plow  
Lubrication  
Points - Plow  
Hitch



## 5-3 LUBRICATION

Figures  
5-1 & 5-2  
show Lu-  
brication  
Points.

5-3.1 Lubrication is the most important factor to get long-lasting trouble free hours from your plow.

5-3.2 Be sure the fittings are free from dirt and paint.

5-3.3 Lubricate the zerk fittings on either of the hitch.

5-3.4 Add grease when the plow is new or if it has set for an extended time. The plow must spin freely and grease should just come out of the pivot sleeve.

5-3.5 Grease the fitting on the gauge wheel assembly.

## NOTES:

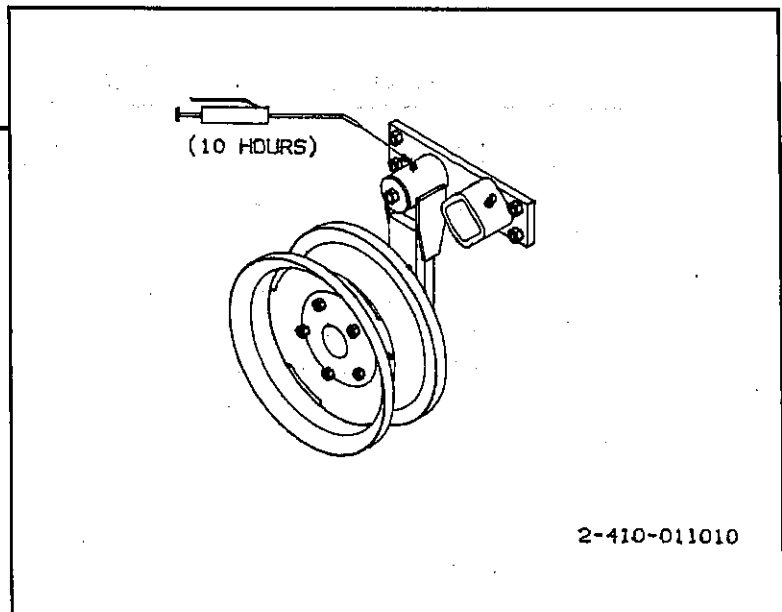


Figure 5-2 Plow Lubrication Points - Gauge Wheel

...Plow operation may be a little slow when new before the pivot stem on the plow gets free.



## DANGER

STAND CLEAR OF PLOW BOTTOMS DURING OPERATION. CHARGE HYDRAULIC CYLINDER WITH HYDRAULIC OIL BEFORE ATTEMPTING TO ROLLOVER PLOW.

Plow rotation occurs when the hydraulic cylinder retracts and extends. Plow rotation is activated *manually* by retracting the cylinder. When the weight of the plow passes dead center, extend the cylinder *manually* to complete the rotation.

The plow should spin in one easy motion. If the plow stops on dead center, steer the tractor in a circle. This should rotate it enough to let the plow roll over. Plow operation may be a little slow when new, before the pivot stem on the plow gets free. Operating with a plow packer helps the plow from stopping on dead center.

## 6-1 FIELD ADJUSTMENTS

See Figures 6-1 and 6-2

6-1.1 Set the plow on the ground. Plow about twenty feet, or until you can see what adjustment the plow needs.

6-1.2 For In-furrow Models: add or remove washers from the frame adjustment

bolts (see Figure 6-2). This sets the plow frame level side-to-side for on-land operation. The frame should also be level when in the ground for in-furrow operation depending on the furrow depth.

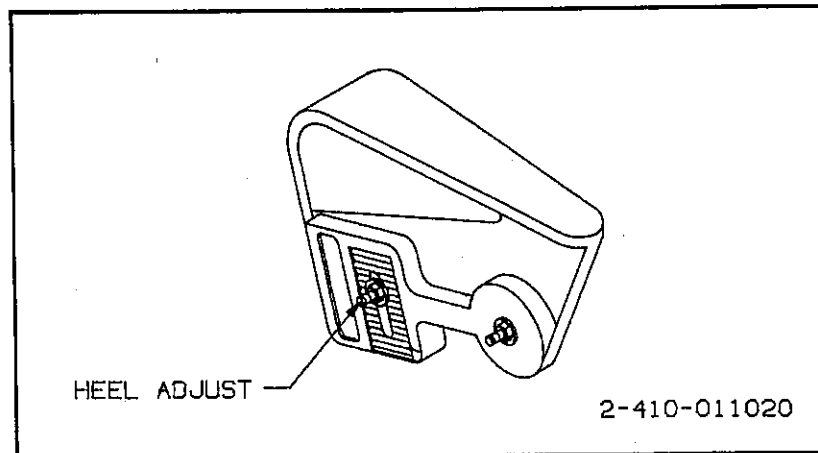


Figure 6-1 Rear Landslide Heel

## PLOW OPERATION

See  
Figure  
6-3

There are two adjustments for the Gauge Wheel: a *Coarse Adjustment* and a *Fine Adjustment*.

6-1.3 Adjust Tractor's top link and rear landslide heel to set the plow frame level end-to-end.

6-1.4 To adjust draft control of plow, add or reduce pressure on the rear landslide.

6-1.5 The Gauge Wheel must be adjusted if it leaves too much of an imprint on the surface of the soil, or if it does not track consistently for the soil type. There are two adjustments for the Gauge Wheel: *coarse adjustment* and *fine adjustment*.

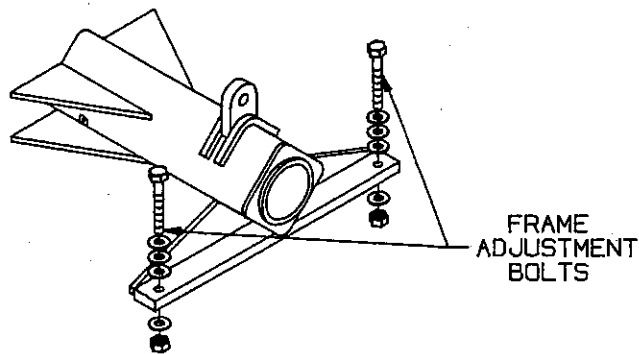
a. Coarse adjustment is done by moving the spindle weldment up or down on the pivot arm. Move the wheel up if the Gauge Wheel penetrates too deeply into the soil. Move the wheel down if it does not provide enough support for the machine.

b. Fine adjustment is done by loosening the nuts on both sides of the *Gauge Wheel Stop*. Lengthen the adjustment bolt to decrease the travel of the Gauge Wheel. Shorten the adjustment bolt length to increase Gauge Wheel travel.

**NOTE:** The heel on the rear bottom is for final adjustment. It should make an imprint on the bottom of the furrow.

Figure 6-2  
Parallel Frame  
Adjust to Ground  
(On-land)

**NOTE:** The hitch and frame for on-land models, must be parallel (side-to-side) with each other.



2-410-011020

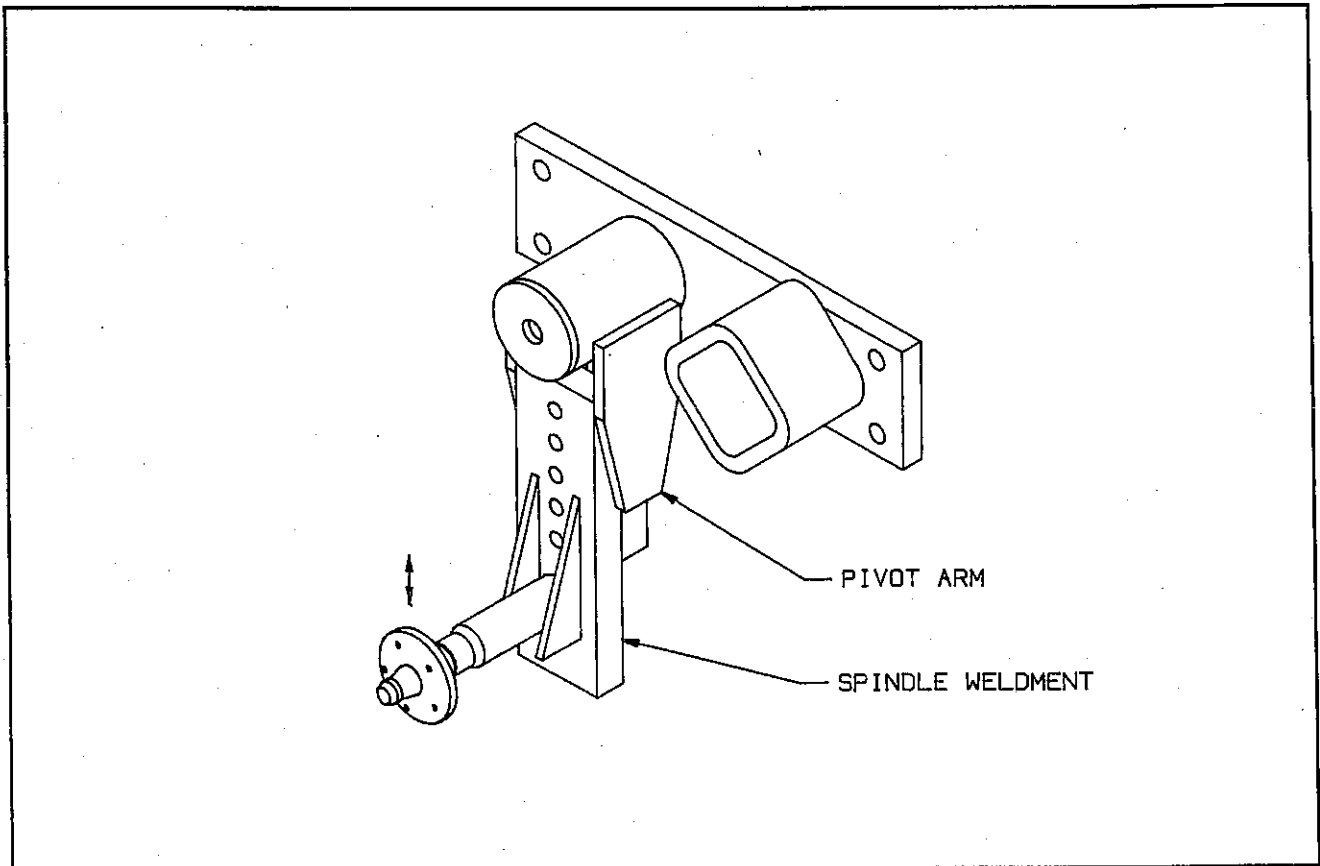


Figure 6-3a Gauge Wheel Coarse Adjustment

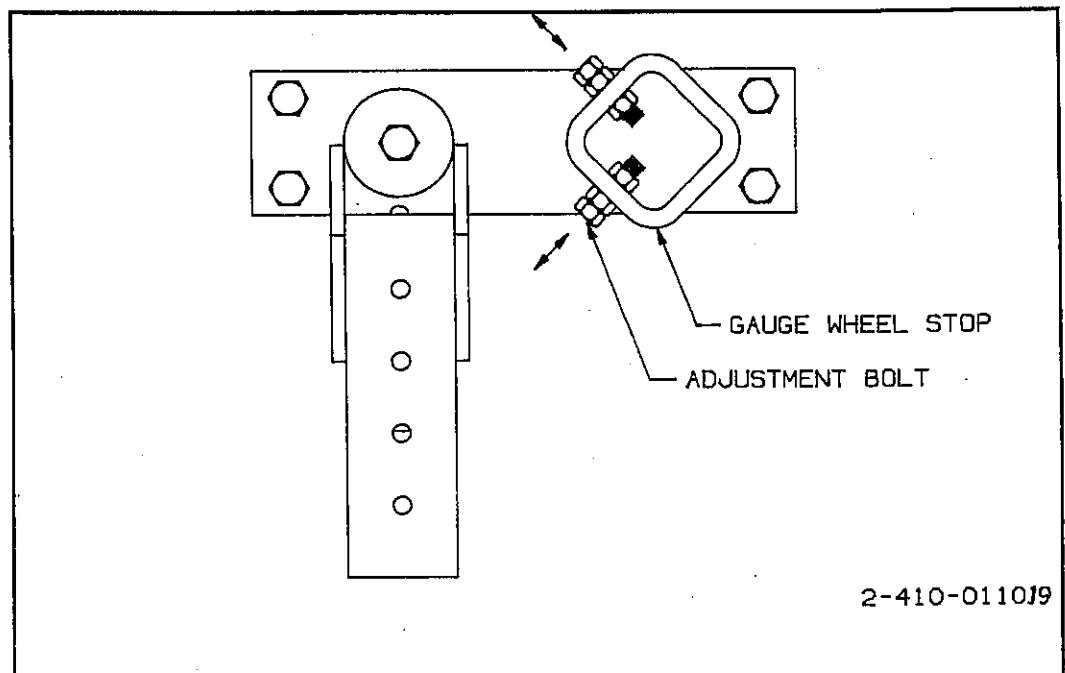


Figure 6-3b Gauge Wheel Fine Adjustment

**PLOW OPERATION**

**NOTES:**

---

# MAINTENANCE & TROUBLESHOOTING 7

---

Very few mechanical moving parts makes the Roll-over Plows relatively maintenance free. Be sure all nuts and bolts are kept tight, and Grease Fittings are lubricated at regular working intervals. Two items of the Rollover Plows which require regular maintenance are Shear Bolts, which can break due to excessive stress, and the pivot tube, which needs regular lubrication.

**NOTE:** *If you cannot repair the equipment using the Troubleshooting guide, contact your Landoll Dealer for help.*

## 7-1 Troubleshooting the Rollover Plow

---

The manual instructions in **Section 6, "Plow Operation,"** tell how to adjust the Rollover Plows. Should problems continue, use the Troubleshooting guide, on the following pages, to locate the problem(s). Follow the suggested solution(s) to get your plow back into proper operation.

### PROBLEM:

**PLOW WILL NOT ROLL OVER**

**FRONT END PULLS TOWARD FURROW/FRONT OF PLOW PLOWS DEEPER THAN REAR**

### SOLUTION:

1. Grease Shaft
2. Check cylinder restrictor valve
3. Check cylinder for binding
  
1. Add front end weight.
2. Lengthen top link to level plow front to back.
3. Adjust landslide heel on rear bottom.
4. Move gauge wheel to forward position on frame.

## MAINTENANCE & TROUBLESHOOTING

### PROBLEM:

### SOLUTION:

**PLOW ENTERS GROUND SLOWLY**

Shorten top link

**POOR TRASH COVERAGE**

Use trash covers. If trash covers are already in use, check that trash covers are against the moldboard on the plow bottom.

**PLOW NOT LEVEL SIDE-TO-SIDE:**

Add or remove washers on leveling bolts.

**BOTTOMS DO NOT SCOUR**

1. Remove protective coating from plow bottom.
2. Plow in sandy soil or until the bottom scours itself.

**REAR BOTTOM PLOWS DEEPER THAN FRONT**

1. Adjust rear landslide heel to allow slight impressions in bottom of furrow.
2. Attach gauge wheel to rear of frame position.

**PLOW RIDING OVER GROUND BECAUSE OF HARD PAN**

1. Check the sharpness of plowshares. Sharpen or replace.
2. Use curved shares.

**COULTERS PUSHING TRASH**

Coulter are set too deep.

## 7-2 MISCELLANEOUS MAINTENANCE

---

- Check the sharpness of plowshares regularly, as many problems can arise from operation with dull plowshares.
- Lubricate the unit regularly per **Section Six**.



# ILLUSTRATED PARTS LIST

8

## CONTENTS

FIG.	ASSEMBLY	PAGE
8-1	FRAME ASSEMBLY – SERIES 8800/8900 .....	8-2
8-2	FRAME ASSEMBLY – 125 SERIES .....	8-4
8-3	FRAME EXTENSION ASSEMBLY & DECALS .....	8-6
8-4	HYDRAULIC ASSEMBLY KIT .....	8-7
8-5	HYDRAULIC CYLINDER – 3 x 8" w/1-3/8" ROD .....	8-8
8-6	HYDRAULIC CYLINDER – 2 X 8" w/1" ROD .....	8-9
8-7	GAUGE WHEEL ASSEMBLY .....	8-10
8-8	619-16 PLOW BOTTOM W/TRASHBOARD OPTION .....	8-12
8-9	619-20 PLOW BOTTOM W/TRASHBOARD OPTION .....	8-14
8-10	625-18 PLOW BOTTOM W/TRASHBOARD OPTION .....	8-16
8-11	SUPER CHIEF PLOW BOTTOM W/TRASHBOARD OPTION .....	8-18
8-12	18" SLAT STRAIGHT BOTTOM OPTION .....	8-20
8-13	COULTER ASSEMBLIES .....	8-22

ILLUSTRATED PARTS LIST

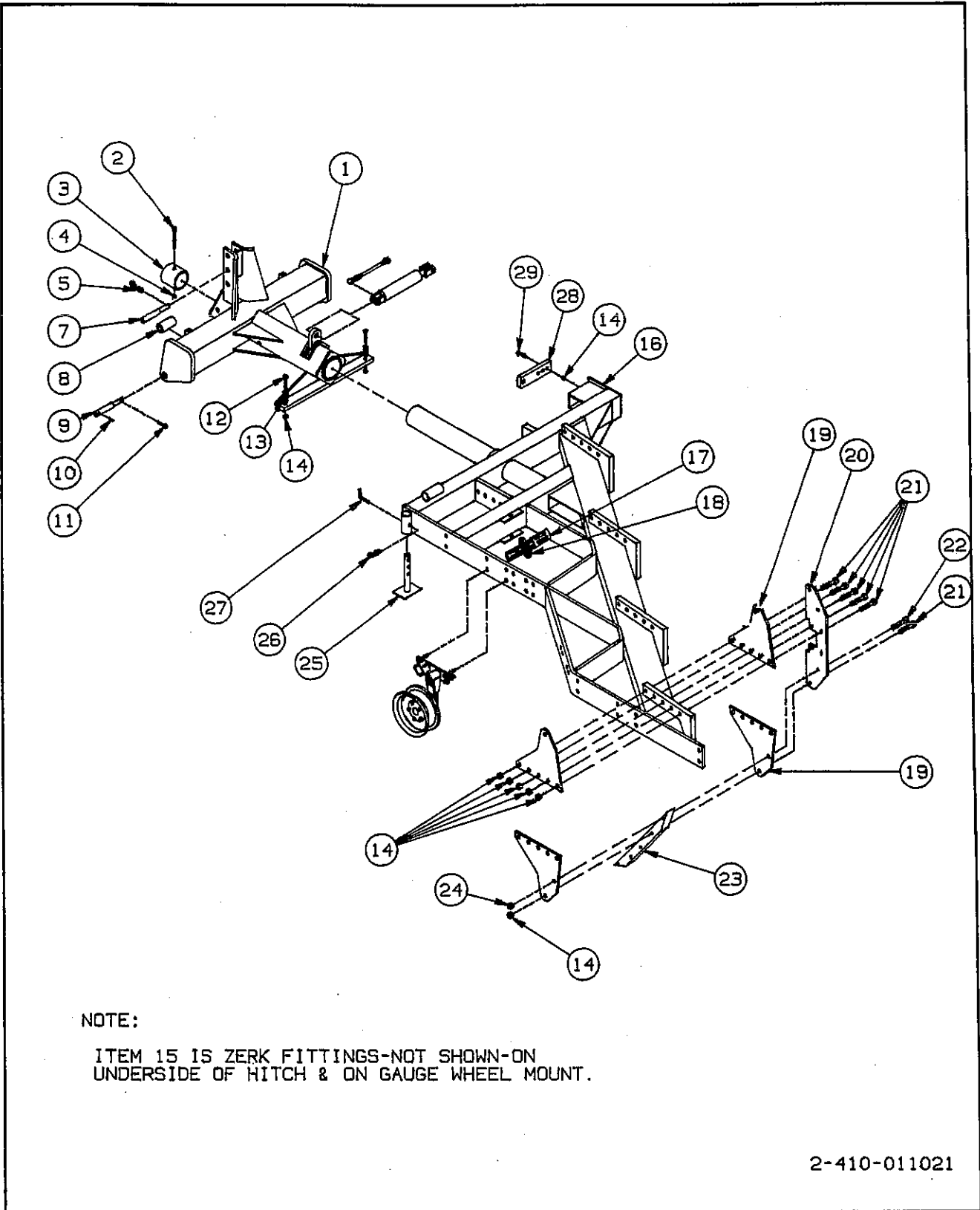
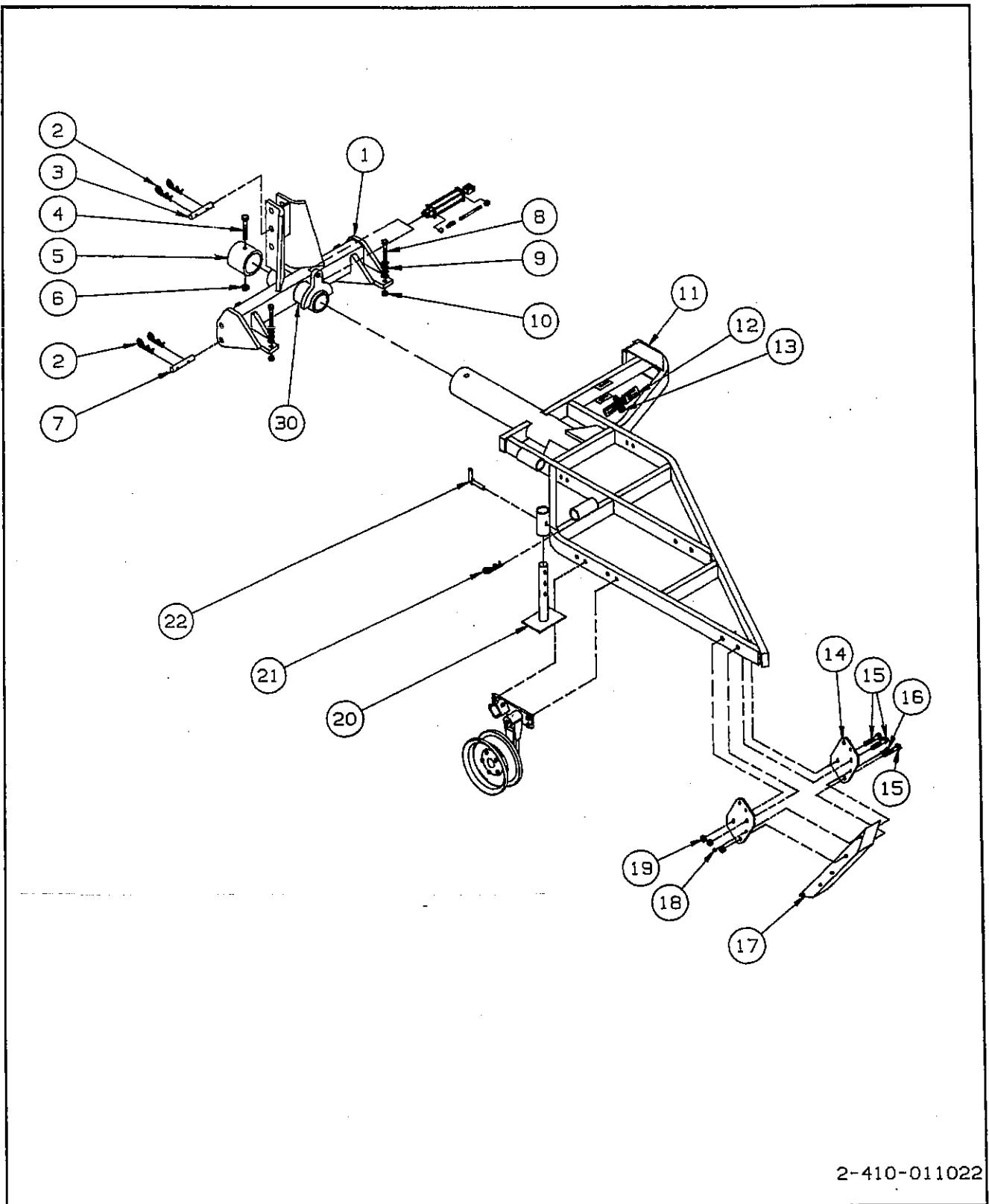


Figure 8-1 Frame Assembly - Series 8800/8900

## FRAME ASSEMBLY – 8800/8900

ITEM NO.	PART NO.	DESCRIPTION	QTY.
1	2-375-010506	HITCH WLDMT, MODEL 8800 IN-FURROW .....	1
	2-375-010507	HITCH WLDMT, MODEL 8855/8866 ON-LAND .....	1
	2-375-010516	HITCH WLDMT, MODEL 8844 ON-LAND .....	1
	2-375-010508	HITCH WLDMT, MODEL 8900 IN-FURROW .....	1
	2-375-010509	HITCH WLDMT, MODEL 8900 ON-LAND .....	1
2	7/8-9X7-1/2HHCS	CAP SCREW, HEX HEAD GR5 .....	1
3	2-831-010064	BUSHING, HITCH PIVOT .....	1
4	7/8-9HFLN	LOCK NUT, HEX GRB .....	1
5	1-557-010014	PIN, HAIR 1/4" DIAM. (8800-IF/8800-OL/8900-IF) .....	4
	1-557-010417	PIN, LYNCH CAT. IV (8900-OL) .....	4
7	2-557-010023	PIN, 3-POINT MAST CAT. III STD (8800-IF/8800-OL/8900-IF) .....	1
	2-557-010411	PIN, 3-POINT MAST, CAT. III STD (8900-OL) .....	1
	2-557-010024	PIN, 3-POINT MAST CAT III QUICK & CAT IV STD/QUICK (8800-IF/8800-OL/8900-IF) .....	1
	2-557-010412	PIN, 3-POINT MAST, CAT III QUICK & CAT IV STD/QUICK (8900-OL) .....	1
8	2-150-010001	BUSHING, 3 PT. HITCH (8800-IF/8800-OL/8900-IF ONLY) .....	2
9	2-557-010057	PIN, 1 & 3 PT. CAT III/CAT IV STD (8800-IF/8800-OL/8900-IF) .....	2
	2-557-010410	PIN, 1 & 3 PT. CAT III/CAT IV STD (8900-OL) .....	2
10	0600-375-04000	PIN, ROLL .....	2
11	7631	QUICK PIN .....	2
12	3/4-10X3HHCS	CAP SCREW, HEX HEAD GR5 .....	2
13	3/4FW	WASHER, FLAT .....	10
14	3/4-10HFLN	LOCK NUT, HEX HEAD GRB .....	A/R
15	5010	ZERK, FITTING 1/4" SAE (NOT SHOWN) .....	A/R
16	2-311-015706	FRAME WLDMT, 88OL (6 BOTTOM - 18") .....	1
	2-311-015707	FRAME WLDMT, 88OL (5 BOTTOM - 18") .....	1
	2-311-015708	FRAME WLDMT, 88OL (4 BOTTOM - 18") .....	1
	2-311-015711	FRAME WLDMT, 88IF (4 BOTTOM - 18") .....	1
	2-311-015747	FRAME WLDMT, 88IF (3 BOTTOM - 18") .....	1
	2-311-015716	FRAME WLDMT, 89OL (6 BOTTOM - 20") .....	1
	2-311-015717	FRAME WLDMT, 89OL (5 BOTTOM - 20") .....	1
	2-311-015721	FRAME WLDMT, 89IF (4 BOTTOM - 20") .....	1
17	1-116-010019	BOX, MANUAL STORAGE .....	1
18	105-0093	CLAMP, HOSE 4-1/2" .....	1
19	2-565-010716	SIDE PLATE, PLOW SHANK (STD) .....	PER SHANK A/R
20	2-117-010030	BRACE, BEAM FEET (STD) .....	PER SHANK A/R
21	3/4-10X4HHCS	CAP SCREW, HEX HEAD .....	PER SHANK A/R
22	1/2-13X4CS	CAP SCREW, HEX HD GR2 .....	PER SHANK A/R
23	2-683-010080	SHANK, PLOW BOTTOM (STD) (1-1/4 x 3) .....	A/R
	2-683-010084	SHANK, NOTCHED PLOW BOTTOM (8900 only) (1-1/4 x 4) .....	A/R
24	1/2-13HFLN	NUT, HEX LOCK GRB .....	PER SHANK A/R
25	6-725-010004	STAND ASSY, JACK .....	1
26	1-557-010013	PIN, HAIR 3/16" DIAM. .....	1
27	2-557-010053	PIN, LOCKOUT .....	1
28	2-014-010131	ANCHOR CYLINDER, 8800/8900 (OL FRAME ONLY) .....	1

ILLUSTRATED PARTS LIST



2-410-011022

Figure 8-2 Frame Assembly - 125 Series

## FRAME ASSEMBLY — 125 SERIES

ITEM NO.	PART NO.	DESCRIPTION	QTY.
1	2-375-010504	HITCH, 125 SERIES .....	1
2	1-557-010014	PIN, HAIR, 1/4" DIAM. ....	6
3	6-557-010163	LEVELING LINK, PIN HITCH .....	1
4	7/8-9X5CS GR5	CAP SCREW, HEX HD .....	1
5	2-150-010124	BUSHING, HITCH PIVOT .....	1
6	7/8-9HFLN	NUT, HEX LOCK GRB .....	1
7	2-557-010002	PIN, CLAMP .....	2
8	3/4-10X2-1/2CS	CAP SCREW, HEX GR5 .....	2
9	3/4FW	WASHER, FLAT .....	10
10	3/4-10HFLN	NUT, LOCK GRB .....	2
11	2-311-015705	FRAME, MAIN WLDMT, 2125 .....	1
	2-311-015704	FRAME, MAIN WLDMT, 3125 .....	1
	2-311-015703	FRAME, MAIN WLDMT, 4125 .....	1
12	1-116-010019	BOX, MANUAL STORAGE .....	1
13	105-0093	CLAMP, HOSE 4-1/2" .....	1
14	2-117-010035	BRACE, BEAM FEET .....	A/R
15	3/4-10X3-1/2CS	CAP SCREW, HEX HD GR5 .....	PER SHANK A/R
16	1/2-13X3-1/2CS	CAP SCREW, HEX GR2 .....	PER SHANK A/R
17	2-683-010080	SHANK, PLOW BOTTOM, STANDARD (1-1/4 - 3) .....	A/R
18	1/2-13HFLN	NUT, HEX LOCK GRB .....	A/R
19	3/4-10HFLN	NUT, HEX LOCK GRB .....	A/R
20	6-725-010004	STAND ASSY, JACK .....	1
21	1-557-010013	PIN, HAIR 3/16" DIAM. ....	1
22	2-557-010053	PIN, LOCKOUT .....	1
*23	1-573-010007	DECAL, "LANDOLL", BLACK .....	2
*24	1-573-010032	TAPE, AMBER REFLECTIVE .....	1
*25	1-573-010033	TAPE, RED REFLECTIVE .....	2
*26	1-573-010096	DECAL, "DANGER! NO RIDERS" .....	1
*27	2-573-010294	DECAL, "MODEL 125" .....	1
*28	2-573-010295	DECAL, "DANGER! STAND CLEAR..." .....	2
*29	2-573-010291	DECAL, "STANTON" .....	1
30	5010	ZERK, GREASE FITTING 1/4" SAE .....	4
*31	8-573-010084	DECAL, "WARNING! BEFORE OPERATION..." .....	1

\* PARTS NOT SHOWN

ILLUSTRATED PARTS LIST

## 8800/8900 FRAME EXTENSION & DECALS\*

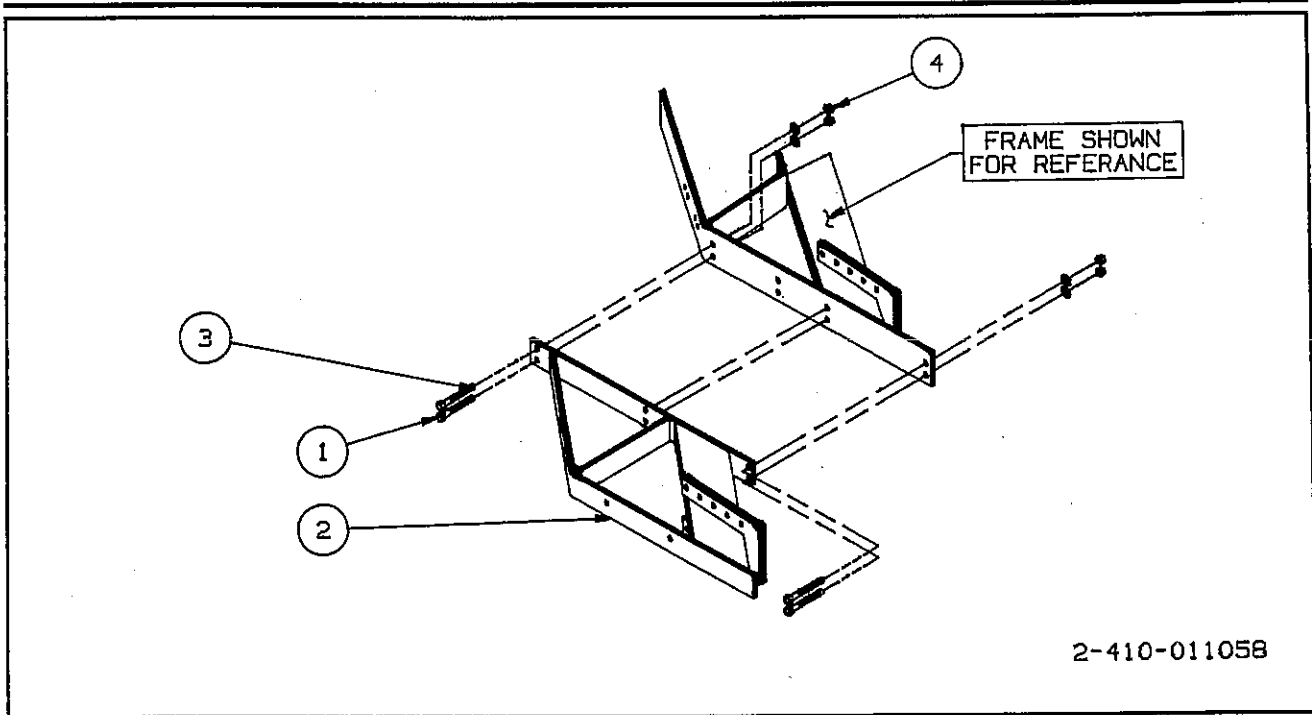


Figure 8-3 Frame Extension Assembly

ITEM NO.	PART NO.	DESCRIPTION	QTY.
1	3/4-10X2-1/2CS	CAP SCREW, HEX GR5	A/R
2	2-276-010670	EXTENSION - 1 BOTTOM 88-IF	1
	2-276-010671	EXTENSION - 1 BOTTOM 88-OL	1
	2-276-010672	EXTENSION - 1 BOTTOM 89-IF	1
	2-276-010673	EXTENSION - 1 BOTTOM 89-OL	1
3	3/4SLW	LOCK WASHER	6
4	3/4-10HFN	NUT, HEX	6
*	1-573-010007	DECAL, LANDOLL BLACK	2
*	1-573-010032	TAPE, AMBER REFLECTIVE	1
*	1-573-010033	TAPE, RED REFLECTIVE	2
*	2-573-010291	DECAL, STANTON	1
*	2-573-010292	DECAL, SERIES 8800	1
*	2-573-010293	DECAL, SERIES 8900	1
*	2-573-010295	DECAL, "DANGER! STAND CLEAR ..."	2
*	1-573-010096	DECAL, "DANGER! NO RIDERS ..."	1
*	8-573-010084	DECAL: "WARNING! BEFORE OPERATING ..."	1

\* DECAL DRAWING NOT AVAILABLE. PLACE SAFETY DECALS IN A VERY VISIBLE PLACE NEAR PLOW BOTTOMS TO PREVENT UNAUTHORIZED PERSONS FROM GETTING TOO CLOSE TO PLOW BOTTOMS.

# HYDRAULIC ASSEMBLY KIT

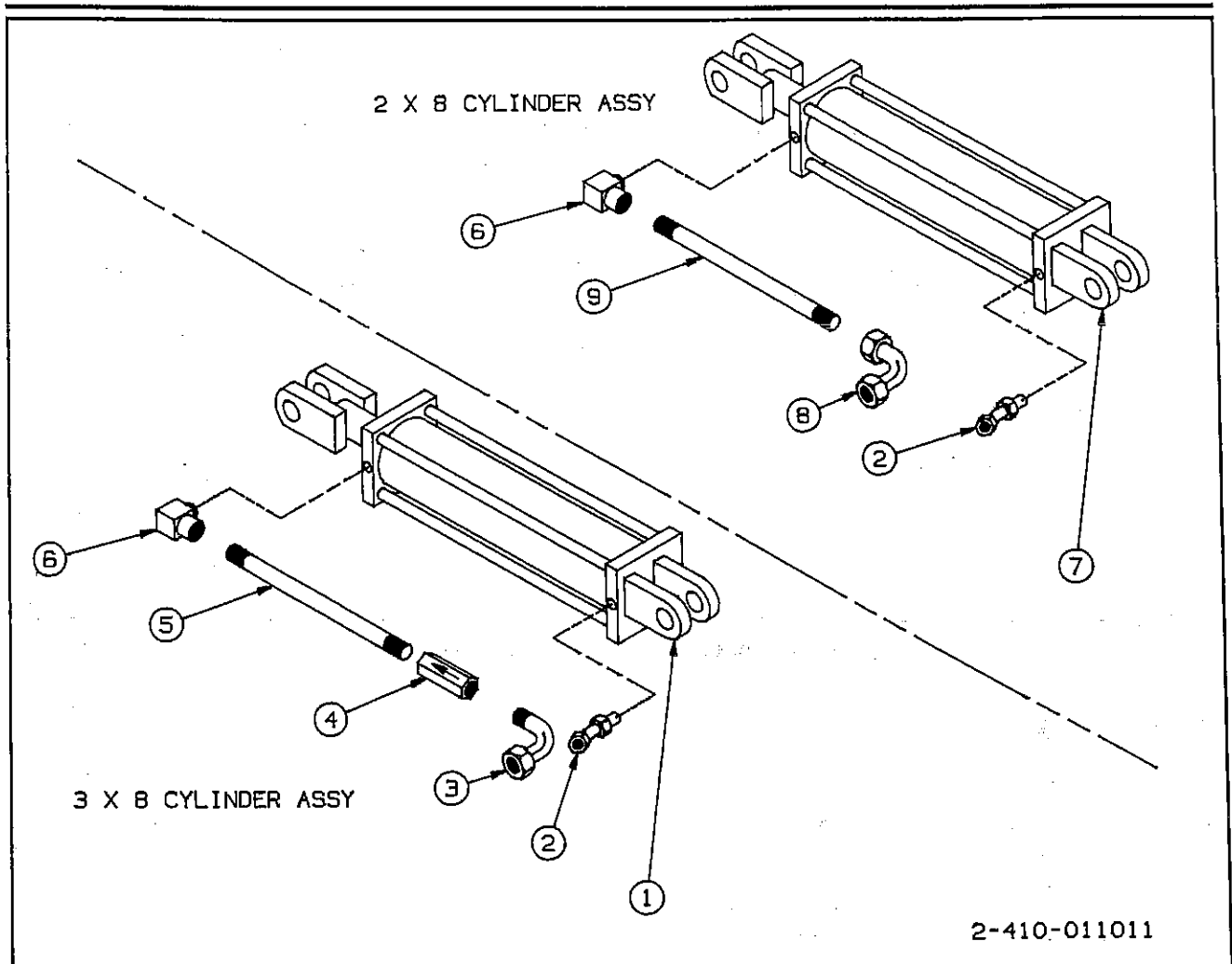


Figure 8-4 Hydraulic Assembly Kit

ITEM NO.	PART NO.	DESCRIPTION	QTY.
1	1-242-010163	CYLINDER, HYDRAULIC, 3 X 8" w/1-3/8" ROD	1*
2	2068-8-8S	O-RING ADAPTER, 45° ELBOW 3/4" TO 1/2" NPT	1
3	118-2671-4	ELBOW, 90° STEEL 1/2" NPT	1
4	2-846-010123	VALVE, RESTRICTOR, 3 X 8" CYLINDER ONLY	1
5	1-560-010001102	NIPPLE, BLACK PIPE, 3 X 8" ROD CYLINDER	1
6	2066-8-8S	O-RING/PIPE ADAPTER	1
7	1-242-010165	CYLINDER, HYDRAULIC, 2X 8" (2125 MODEL ONLY)	1*
8	1/2ELBOW	ELBOW, BLACK PIPE	1
9	1-560-010001107	NIPPLE, BLACK PIPE, 2 X 8" CYLINDER	1

\* PARTS BREAKDOWN OF HYDRAULIC CYLINDERS INCLUDED ON FOLLOWING PAGES.

ILLUSTRATED PARTS LIST

## HYDRAULIC CYLINDER (#1-242-010163)

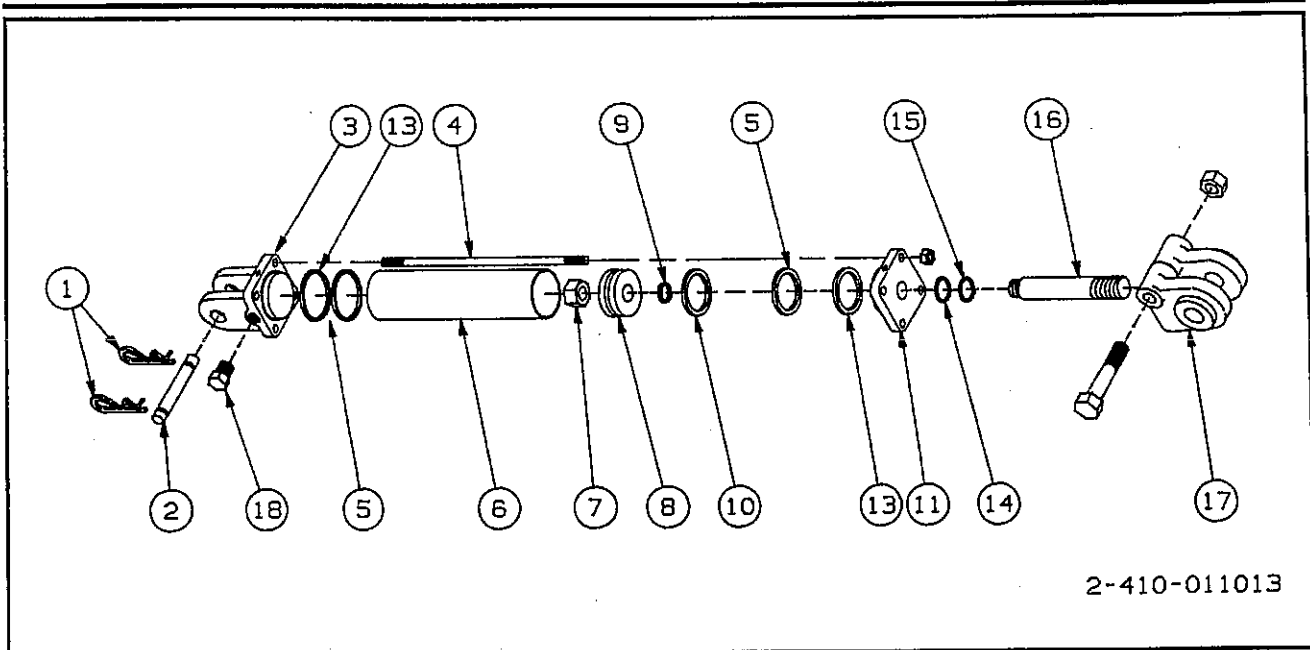
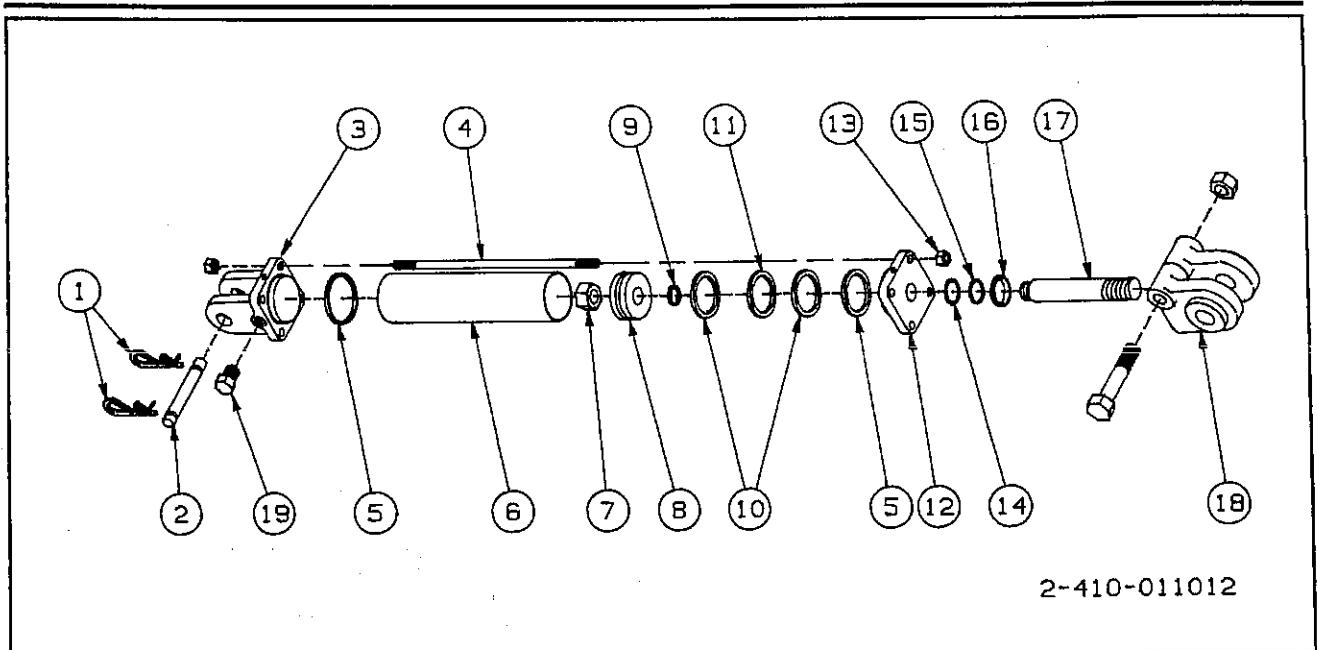


Figure 8-5 Hydraulic Cylinder - 3 x 8" w/1-3/8" rod

ITEM NO.	PART NO.	DESCRIPTION	QTY.
1	190600003	CLIP, HAIRPIN .....	4
2	190400001	PIN, CLEVIS .....	2
3	141500043	BUTT .....	1
4	170201121	TIE ROD ASSY .....	4
5	240000232	O-RING .....	2
6	051500007	TUBE .....	1
7	220000210	LOCKNUT, 1-14 .....	1
8	071500244	PISTON .....	1
9	240000022	O-RING .....	1
10	240060334	SEAL, CROWN .....	2
11	081500323	GLAND .....	1
12	200013106	PLUG, PORT (NOT SHOWN) .....	2
13	240061232	WASHER, BACKUP .....	2
14	240020106	U-CUP .....	1
15	240014137	WIPER .....	1
16	010700431	ROD, PISTON .....	1
17	100000423	ASSY, CLEVIS .....	1
18	200300040	PLUG,PORT 3/4-16 .....	1
19	1-242-010164	PACKING KIT (ITEMS 5, 9, 11, 13, 14, & 15) .....	1



## HYDRAULIC CYLINDER (#1-242-010165)

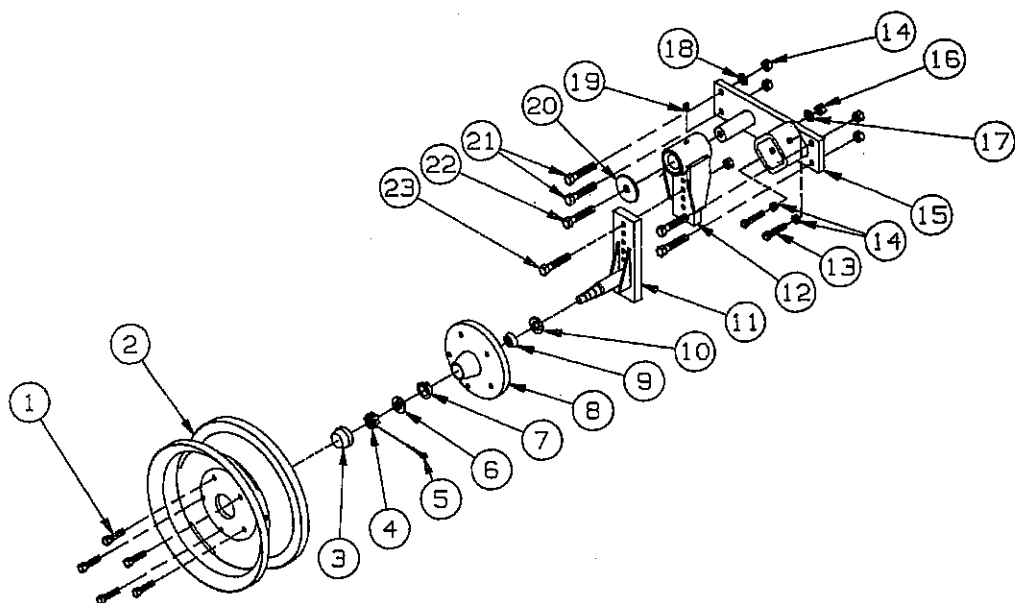


2-410-011012

Figure 8-6 Hydraulic Cylinder - 2 x 8 w/1" rod

ITEM NO.	PART NO.	DESCRIPTION	QTY.
1	190600003	CLIP, FULL HAIRPIN .....	2
2	190400001	PIN, CLEVIS .....	1
3	141100003	GLAND, ANCHOR .....	1
4	170103122	ROD, TIE .....	2
5	240001326	O-RING .....	2
6	051100008	TUBE .....	1
7	220000208	LOCK NUT, PISTON ROD .....	1
8	071100004	PISTON .....	1
9	240000018	O-RING .....	1
10	240005326	WASHER, BACKUP .....	2
11	240000326	O-RING .....	1
12	081100006	GLAND, ROD .....	1
13	220000105	NUT, TIE ROD .....	8
14	240000214	O-RING .....	1
15	240005214	WASHER, BACKUP .....	2
16	250001214	SEAL, WIPER .....	1
17	010400008	ROD, PISTON .....	1
18	100000014	ASSY, CLEVIS .....	1
19	200300040	PLUG, 3/4-16 PORT .....	1
20	1-242-010166	PACKING KIT (ITEMS 5, 9, 10, 11, 14, 15, & 16) .....	1

ILLUSTRATED PARTS LIST



2-410-011018

Figure 8-7 Gauge Wheel Assembly

## GAUGE WHEEL ASSEMBLY

ITEM NO.	PART NO.	DESCRIPTION	QTY.
1	1-104-010002	BOLT, WHEEL, 1/2" X 1-3/8" .....	6
2	2-870-010007	WHEEL, 6-BOLT 15" X 6LB .....	1
3	1-161-010003	HUB CAP, 6-BOLT .....	1
4	7/8-14HSN	NUT, HEX SLOTTED 7/8"-14 .....	1
5	5/32X1-1/4	PIN, COTTER .....	1
6	1-861-010004	WASHER, SPINDLE .....	1
7	1-076-010007	CONE, INNER .....	1
	1-076-010010	CUP, OUTER (INC. W/HUB) .....	1
8	1-406-010012	HUB, 6-BOLT W/CUPS .....	1
9	1-076-010009	CONE, INNER .....	1
	1-076-010012	CUP, OUTER (INC. W/HUB) .....	1
10	1-659-010004	SEAL, GREASE 1-5/8" I.D. ....	1
11	2-326-010274	SPINDLE WLDMT, GAUGE WHEEL (MODEL 8800) .....	1
	2-326-010279	GAUGE WHEEL, SPINDLE WLDMT (MODEL 8900) .....	1
12	2-326-010273	TOP ADJ WLDMT, GAUGE WHEEL (MODEL 8800) .....	1
	2-326-010278	GAUGE WHEEL, PIVOT WLDMT (MODEL 8900) .....	1
13	3/4-10X2HHCS	CAP SCREW, HEX HEAD .....	2
14	3/4-10HFN GR5	NUT, GR5 .....	8
15	2-326-010272	FRAME MOUNT WLDMT, GAUGE WHEEL (MODEL 8800) .....	1
	2-326-010277	GAUGE WHEEL, MOUNT WLDMT (MODEL 8900) .....	1
16	5/8-11HFN	NUT, HEX (8800 SERIES ONLY) .....	2
17	5/8SLW	WASHER, SPLIT LOCK (8800 SERIES ONLY) .....	2
18	3/4SLW	WASHER, SPLIT LOCK .....	5
19	5010	ZERK, GREASE FITTING 1/4" SAE .....	1
20	2-161-010035	CAP PIVOT, GAUGE WHEEL .....	1
21	3/4-10X3HHCS	CAP SCREW, HEX HD GR5 (8800 SERIES ONLY) .....	4
	3/4-10X3-1/2CS	CAP SCREW, HEX HD GR5 (8900 SERIES ONLY) .....	4
22	3/4-16X1-1/4CS	CAP SCREW, HEX HD GR5 .....	1
23	5/8-11X3HHCS	CAP SCREW, HEX HEAD (8800 SERIES ONLY) .....	2
	3/4-10X3-1/2CS	CAP SCREW, HEX HD GR5 (8900 SERIES ONLY) .....	2

ILLUSTRATED PARTS LIST

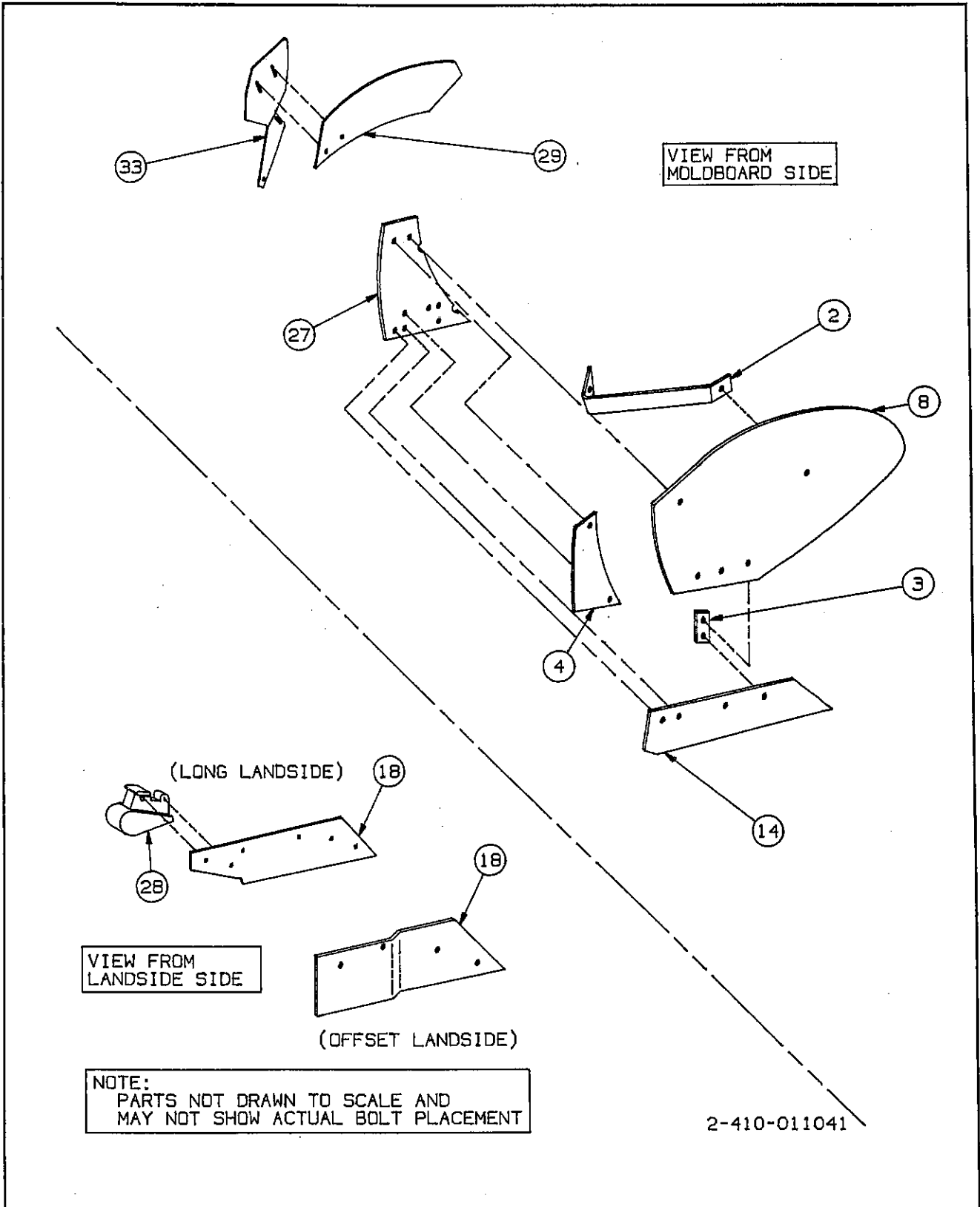


Figure 8-8 619-16 Plow Bottom w/Trashboard Option

# PLOW BOTTOM — 619-16 W/TRASHBOARD OPTION

ITEM NO.	PART NO.	DESCRIPTION	QTY/ BOTTOM
	2-111-010031	BOTTOM, LH 619-16, LONG LANDSIDE W/WHEEL	A/R
	2-111-010032	BOTTOM, RH 619-16, LONG LANDSIDE W/WHEEL	A/R
	2-111-010005	BOTTOM, LH 619-16, OFFSET LANDSIDE	A/R
	2-111-010006	BOTTOM, RH 619-16, OFFSET LANDSIDE	A/R
2	***	STANDARD TO MOLDBOARD BRACE	1
	7/16-14X1-1/2PW	PLOW BOLT, 7/16-14 X 1-1/2", #3 HD, GR5 (TO MOLDBOARD)	1
	7/16-14HFLN	NUT, LOCK, 7/16-14 (TO MOLDBOARD)	1
	5/8-14X3-1/2PB	PLOW BOLT, 5/8-14 X 3-1/2", #3 HD, GR5 (TO LANDSIDE)	1
	5/8SLW	LOCKWASHER, 5/8" (TO LANDSIDE)	1
	5/8-11HFN	NUT, 5/8-11 (TO LANDSIDE)	1
3(L)	2-744-010031-1	MOLDBOARD-TO-SHARE STRAP	1
3(R)	2-744-010031-2	MOLDBOARD-TO-SHARE STRAP	1
4(L)	2-439-010003-1	SHIN LH, 619-16	1
4(R)	2-439-010003-2	SHIN RH, 619-16 (NOT SHOWN)	1
	7/16-14X1-1/4PB	PLOW BOLT, 7/16-14 X 1-1/4" #3 HD, GR5	2
	7/16-14HFN	NUT, 7/16-14	2
	7/16FW	WASHER, 7/16" USS	2
8(L)	2-483-010003-1	MOLDBOARD LH, 619-16	1
8(R)	2-483-010003-2	MOLDBOARD RH, 619-16 (NOT SHOWN)	1
	7/16-14X1-1/4PB	PLOW BOLT, 7/16-14 X 1-1/4", #3 HD, GR5	4
	7/16FW	WASHER, 7/16" USS	4
	7/16-14HFN	NUT, 7/16-14	4
14(L)	2-663-010008-1	SHARE, LH, 619-16	1
14(R)	2-663-010008-2	SHARE, RH, 619-16 (NOT SHOWN)	1
	7/16-14X1-1/4LH	PLOW BOLT, LH, 7/16-14 X 1-1/4", #3 HD, GR5	4
	7/16-14LHFN	NUT, LH, 7/16-14	4
	7/16FW	WASHER, 7/16" USS	4
18(L)	2-439-010009-4	LANDSIDE LH, 619-16, LONG FOR HEEL	1
	2-439-010009-8	LANDSIDE LH, 619-16, OFFSET LANDSIDE	1
18(R)	2-439-010009-2	LANDSIDE RH, 619-16, LONG FOR HEEL (NOT SHOWN)	1
	2-439-010009-6	LANDSIDE RH, 619-16, OFFSET LANDSIDE (NOT SHOWN)	1
	7/16-14X1-3/4PB	PLOW BOLT, 7/16-14 X 1-3/4", #3 HD, GR5	1*
	7/16-14X2-1/2PB	PLOW BOLT, 7/16-14 X 2-1/2", #3 HD, GR5	1
	7/16-14X1-1/4PB	PLOW BOLT, 7/16-14 X 1-1/4", #3 HD, GR5	1
	7/16FW	WASHER, 7/16" USS	3*
	7/16-14HFN	NUT, 7/16-14	3*
27(L)	2-313-010003-1	STANDARD LH, 619-16	1
27(R)	2-313-010003-2	STANDARD RH, 619-16 (NOT SHOWN)	1
28(L)	2-439-010009-3	HEEL LH, 619-16	1
28(R)	2-439-010009-1	HEEL RH, 619-16 (NOT SHOWN)	1
<b>TRASHBOARD OPTION**</b>			
29(L)	2-222-010099-2	TRASHBOARD, 619-16	1
29(R)	2-222-010099-4	TRASHBOARD, 619-16	1
	7/16-14X1-1/4PB	PLOW BOLT, 7/16-14 X 1-1/4", #3 HD, GR5	2
	7/16-14HFN	NUT, 7/16-14	2
	7/16FW	WASHER, 7/16" USS	2
33(L)	2-222-010099-1	TRASHBOARD BRACKET, LH	1
33(R)	2-222-010099-3	TRASHBOARD BRACKET, RH	1
<b>ACCESSORIES FOR SHANK ATTACHMENT</b>			
	5/8-11X3HHCS	CAP SCREW, HEX HD 5/8-11 X 3"	1
	5/8-11X3PLW	BOLT, PLOW 5/8-11 X 3"	2
	5/8-11HFLN	LOCKNUT	3
	5/8FW	WASHER, FLAT	3

\* ADD 2 OF EACH ITEM FOR LONG LANDSIDE FOR HEEL.

\*\* TRASHBOARD BRACKET ATTACHES TO LANDSIDE SIDE OF STANDARD.

\*\*\* PART NOT SOLD SEPARATELY.

ILLUSTRATED PARTS LIST

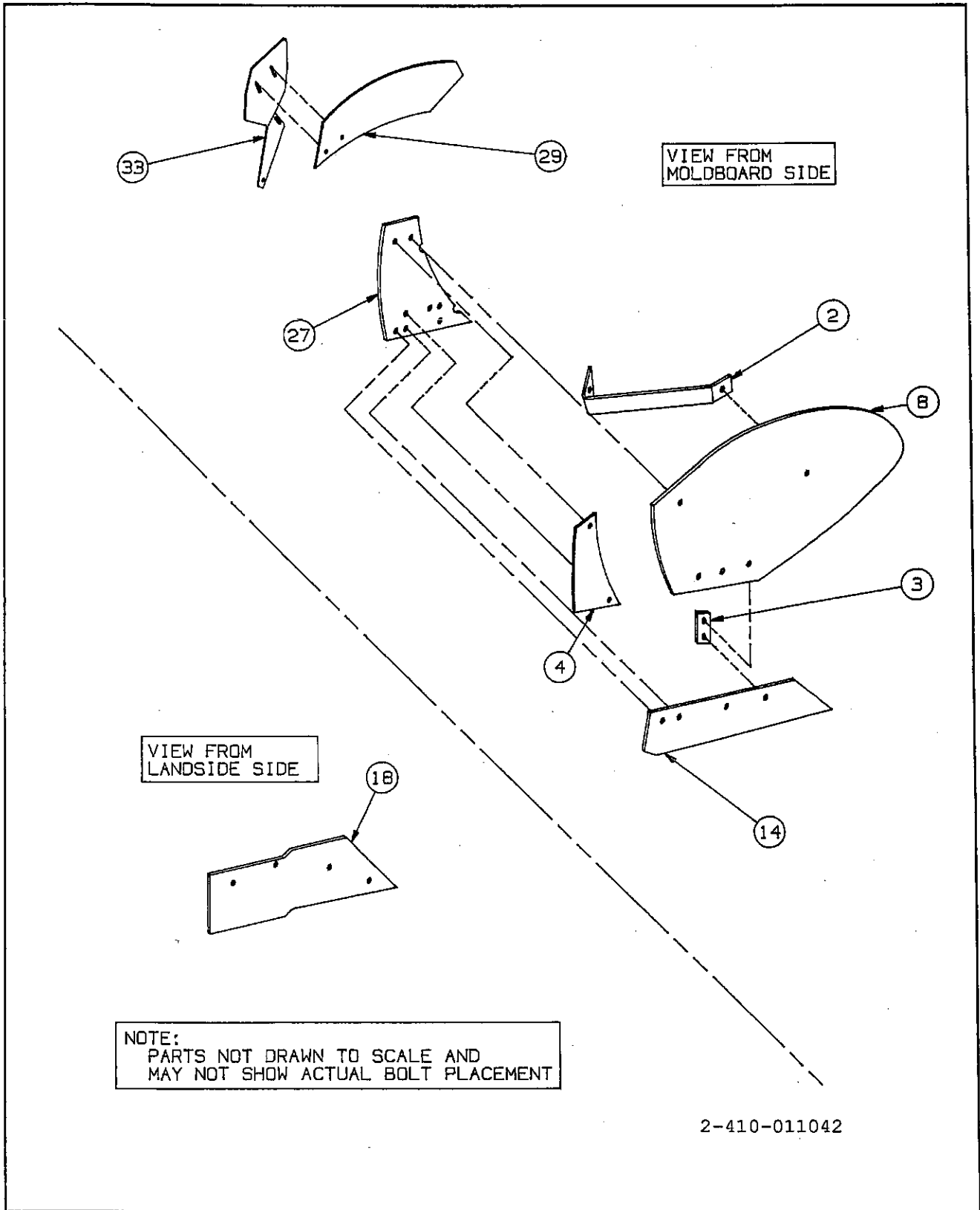


Figure 8-9 619-20 Plow Bottom w/Trashboard Option

# PLOW BOTTOM — 619-20 W/TRASHBOARD OPTION

ITEM NO.	PART NO.	DESCRIPTION	QTY/ BOTTOM
	2-111-010025	BOTTOM, LH 619-20" LANDSIDE (COMPLETE BOTTOM)	A/R
	2-111-010026	BOTTOM, RH 619-20" LANDSIDE	A/R
2	**	STANDARD TO MOLDBOARD BRACE	1
	7/16-14X1-1/2PW	PLOW BOLT, 7/16-14 X 1-1/2", #3 HD, GR5 (TO MOLDBOARD)	1
	7/16-14HFLN	NUT, LOCK, 7/16-14 (TO MOLDBOARD)	1
	5/8-14X3-1/2PB	PLOW BOLT, 5/8-14 X 3-1/2", #3 HD, GR5 (TO LANDSIDE)	1
	5/8SLW	LOCKWASHER, 5/8" (TO LANDSIDE)	1
	5/8-11HFN	NUT, 5/8-11 (TO LANDSIDE)	1
3(L)	2-744-010031-3	MOLDBOARD-TO-SHARE STRAP	1
3(R)	2-744-010031-499	MOLDBOARD-TO-SHARE STRAP	1
4(L)	2-439-010003-5	SHIN LH, 619-20	1
4(R)	2-439-010003-6	SHIN RH, 619-20 (NOT SHOWN)	1
	7/16-14X1-1/4PB	PLOW BOLT, 7/16-14 X 1-1/4" #3 HD, GR5	2
	7/16-14HFN	NUT, 7/16-14	2
	7/16FW	WASHER, 7/16" USS	2
8(L)	2-483-010003-5	MOLDBOARD LH, 619-20	1
8(R)	2-483-010003-6	MOLDBOARD RH, 619-20 (NOT SHOWN)	1
	7/16-14X1-1/4PB	PLOW BOLT, 7/16-14 X 1-1/4", #3 HD, GR5	4
	7/16FW	WASHER, 7/16" USS	4
	7/16-14HFN	NUT, 7/16-14	4
14(L)	2-663-010008-5	SHARE, LH, 619-20	1
14(R)	2-663-010008-6	SHARE, RH, 619-20 (NOT SHOWN)	1
	7/16-14X1-1/4LH	PLOW BOLT, LH, 7/16-14 X 1-1/4", #3 HD, GR5	5
	7/16-14LHFN	NUT, LH 7/16-14	5
	7/16FW	WASHER, 7/16" USS	5
18(L)	2-439-010009-12	LANDSIDE LH, 619-20	1
18(R)	2-439-010009-16	LANDSIDE RH, 619-20 (NOT SHOWN)	1
	7/16-14X1-3/4PB	PLOW BOLT, 7/16-14 X 1-3/4", #3 HD, GR5	1
	7/16-14X2-1/2PB	PLOW BOLT, 7/16-14 X 2-1/2", #3 HD, GR5	1
	7/16-14X1-1/4PB	PLOW BOLT, 7/16-14 X 1-1/4", #3 HD, GR5	1
	7/16FW	WASHER, 7/16" USS	3
	7/16-14HFN	NUT, 7/16-14	3
27(L)	2-313-010003-5	STANDARD, LH, 619-20	1
27(R)	2-313-010003-6	STANDARD, RH, 619-20 (NOT SHOWN)	1
<b>TRASHBOARD OPTION*</b>			
29(L)	2-222-010003-8	TRASHBOARD, LH, 619-20	1
29(R)	2-222-010003-6	TRASHBOARD, RH, 619-20 (NOT SHOWN)	1
	7/16-14X1-1/4PB	PLOW BOLT, 7/16-14 X 1-1/4", #3 HD, GR5	2
	7/16-14HFN	NUT, 7/16-14	2
	7/16FW	WASHER, 7/16" USS	2
33(L)	2-222-010003-7	TRASHBOARD BRACKET, LH, 619-20	1
33(R)	2-222-010003-5	TRASHBOARD BRACKET, RH, 619-20 (NOT SHOWN)	1
<b>ACCESSORIES FOR SHANK ATTACHMENT</b>			
	5/8-11X3HHCS	CAP SCREW, HEX HD 5/8-11 X 3"	1
	5/8-11X3PLW	BOLT, PLOW 5/8-11 X 3"	2
	5/8-11HFLN	LOCKNUT	3
	5/8FW	WASHER, FLAT	3

\* TRASHBOARD BRACKET CONNECTED TO STANDARD ON LANDSIDE SIDE.

\*\* PART NOT SOLD SEPARATELY.

ILLUSTRATED PARTS LIST

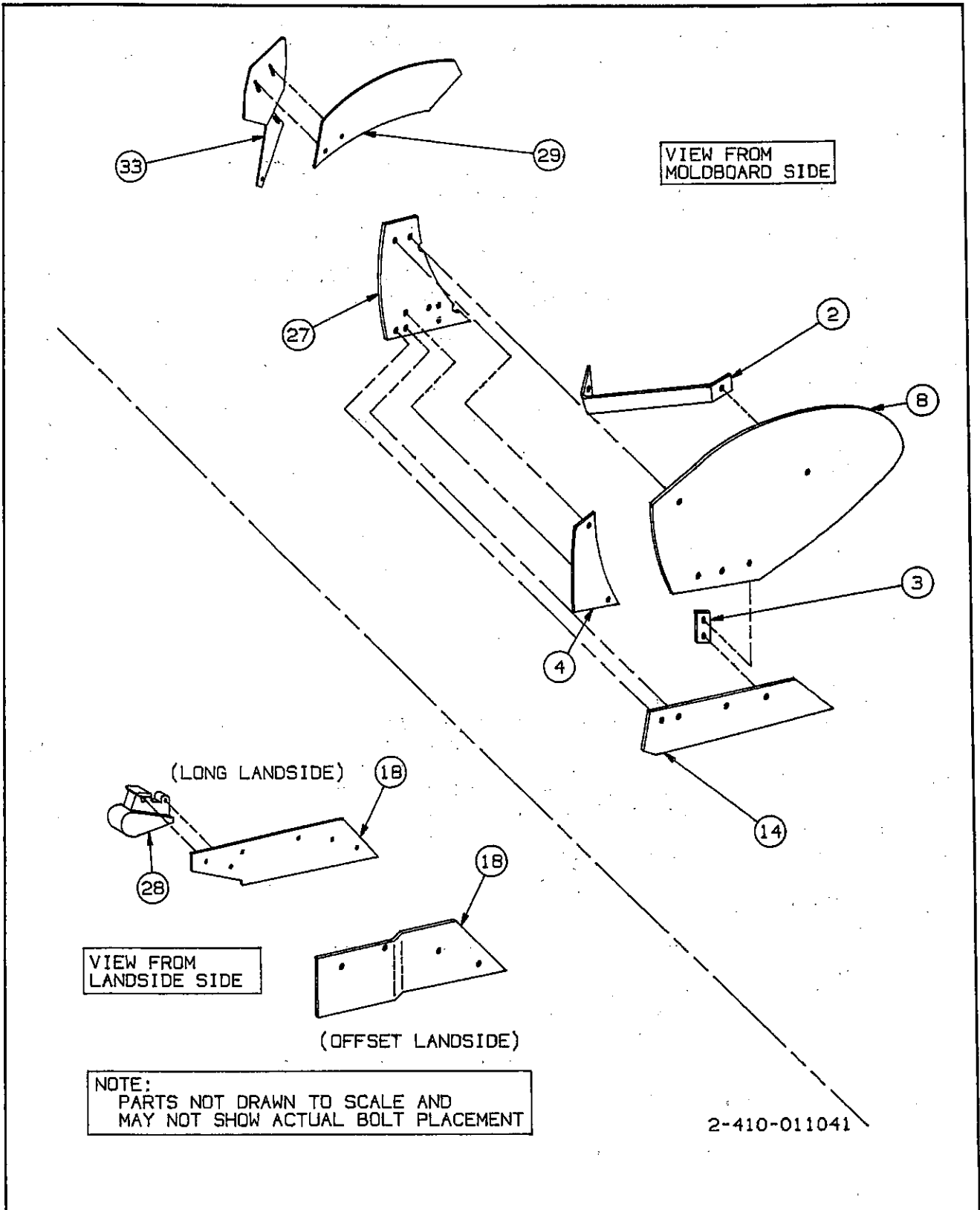


Figure 8-10 625-18 Plow Bottoms w/Trashboard Option



# PLOW BOTTOM — 625-18 W/TRASHBOARD OPTION

ITEM NO.	PART NO.	DESCRIPTION	QTY/ BOTTOM
	2-111-010007	BOTTOM, LH 625-18, OFFSET LANDSIDE	5
	2-111-010008	BOTTOM, RH 625-18, OFFSET LANDSIDE	5
	2-111-010009	BOTTOM, LH 625-18, LONG LANDSIDE, ADJ HEEL	1
	2-111-010010	BOTTOM, RH 625-18, LONG LANDSIDE, ADJ HEEL	1
2	***	STANDARD TO MOLDBOARD BRACE	1
	7/16-14X1-1/2PW	PLOW BOLT, 7/16-14 X 1-1/2", #3 HD, GR5 (FOR MOLDBOARD)	1
	7/16-14HFLN	NUT, LOCK, 7/16-14 (FOR MOLDBOARD)	1
	5/8-14X3-1/2PB	PLOW BOLT, 5/8-14 X 3-1/2", #3 HD, GR5 (FOR LANDSIDE)	1
	5/8SLW	LOCKWASHER, 5/8" (FOR LANDSIDE)	1
	5/8-11HFN	NUT, 5/8-11 (FOR LANDSIDE)	1
3(L)	2-744-010003-1	MOLDBOARD-TO-SHARE STRAP	1
3(R)	2-744-010003-2	MOLDBOARD-TO-SHARE STRAP	1
4(L)	2-439-010003-3	SHIN LH, 625-18, OFFSET LANDSIDE & LONG LANDSIDE	1
4(R)	2-439-010003-4	SHIN RH, 625-18, OFFSET LANDSIDE & LONG LANDSIDE (NOT SHOWN)	1
	7/16-14X1-1/4PB	PLOW BOLT, 7/16-14 X 1-1/4" #3 HD, GR5	2
	7/16-14HFN	NUT, 7/16-14	2
	7/16FW	WASHER, 7/16" USS	2
8(L)	2-483-010003-3	MOLDBOARD LH, 625-18	1
8(R)	2-483-010003-4	MOLDBOARD RH, 625-18 (NOT SHOWN)	1
	7/16-14X1-1/4PB	PLOW BOLT, 7/16-14 X 1-1/4", #3 HD, GR5	4
	7/16FW	WASHER, 7/16" USS	4
	7/16-14HFN	NUT, 7/16-14	4
14(L)	2-663-010008-3	SHARE, LH, 625-18, OFFSET LANDSIDE & LONG LANDSIDE	1
14(R)	2-663-010008-4	SHARE, RH, 625-18, OFFSET LANDSIDE & LONG LANDSIDE (NOT SHOWN)	1
	7/16-14X1-1/4LH	PLOW BOLT, LH, 7/16-14 X 1-1/4", #3 HD, GR5	5
	7/16-14LHFN	NUT, LH 7/16-14	5
	7/16FW	WASHER, 7/16" USS	5
18(L)	2-439-010009-8	LANDSIDE LH, 625-18, OFFSET	1
18(R)	2-439-010009-6	LANDSIDE RH, 625-18, OFFSET (NOT SHOWN)	1
	7/16-14X1-3/4PB	PLOW BOLT, 7/16-14 X 1-3/4", #3 HD, GR5	1*
	7/16-14X2-1/2PB	PLOW BOLT, 7/16-14 X 2-1/2", #3 HD, GR5	1
	7/16-14X1-1/4PB	PLOW BOLT, 7/16-14 X 1-1/4", #3 HD, GR5	1
	7/16FW	WASHER, 7/16" USS	3*
	7/16-14HFN	NUT, 7/16-14	3*
27(L)	2-313-010003-3	STD, LH, 625-18, OFFSET, LANDSIDE & LONG LANDSIDE	1
27(R)	2-313-010003-4	STD, RH, 625-18, OFFSET, LANDSIDE & LONG LANDSIDE (NOT SHOWN)	1
28(L)	2-439-010009-3	HEEL, LH, 625-18, LONG LANDSIDE	1
28(R)	2-439-010009-1	HEEL, RH, 625-18, LONG LANDSIDE (NOT SHOWN)	1
<b>TRASHBOARD OPTION**</b>			
29(L)	2-222-010099-12	TRASHBOARD, LH, 625-18, OFS LANDSIDE & LONG LANDSIDE	1
29(R)	2-222-010099-10	TRASHBOARD, RH, 625-18, OFS LANDSIDE & LONG LANDSIDE (NOT SHOWN)	1
	7/16-14X1-1/4PB	PLOW BOLT, 7/16-14 X 1-1/4", #3 HD, GR5	2
	7/16-14HFN	NUT, 7/16-14	2
	7/16FW	WASHER, 7/16" USS	2
33(L)	2-222-010099-11	TRASHBD BRKT, LH, 625-18, OFS LANDSIDE & LONG LANDSIDE	1
33(R)	2-222-010099-9	TRASHBD BRKT, RH, 625-18, OFS LANDSIDE & LONG LANDSIDE (NOT SHOWN)	1
<b>ACCESSORIES FOR SHANK ATTACHMENT</b>			
	5/8-11X3HHCS	CAP SCREW, HEX HD 5/8-11 X 3"	1
	5/8-11X3PLW	BOLT, PLOW 5/8-11 X 3"	2
	5/8-11HFLN	LOCKNUT	3
	5/8FW	WASHER, FLAT	3

\* ADD 2 OF EACH ITEM FOR LONG LANDSIDE FOR HEEL.

\*\* TRASHBOARD BRACKET ATTACHES TO LANDSIDE SIDE OF STANDARD.

\*\*\* PART NOT SOLD SEPARATELY.

ILLUSTRATED PARTS LIST

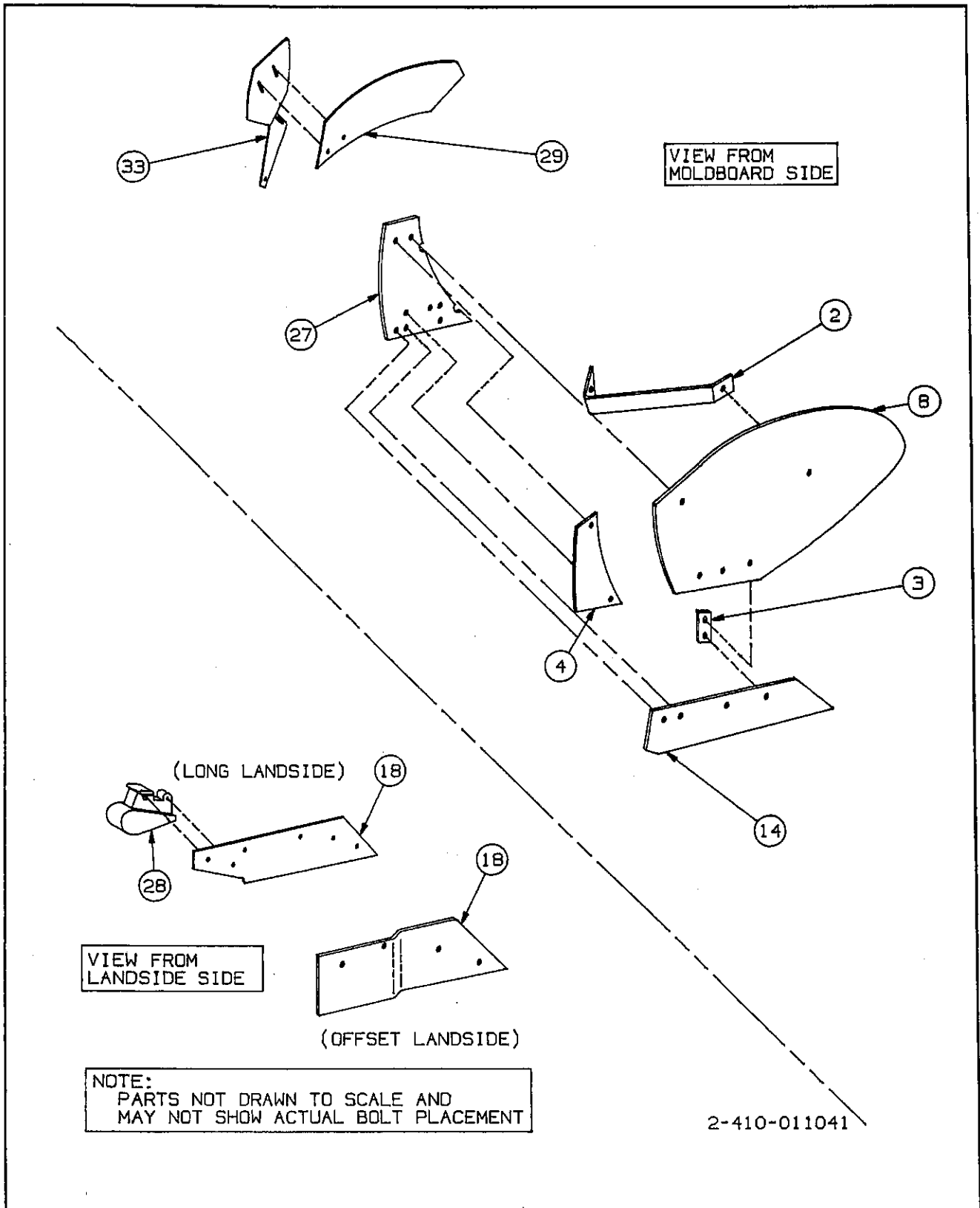


Figure 8-11 Super Chief Plow Bottom w/Trashboard Option

# PLOW BOTTOM — SUPERCHIEF W/TRASHBD OPTION

ITEM NO.	PART NO.	DESCRIPTION	QTY/ BOTTOM
	2-111-010033	BOTTOM, LH SUPERCHIEF STYLE W/18" CUT, & LANDSIDE OFS	5
	2-111-010034	BOTTOM, RH SUPERCHIEF STYLE W/18" CUT, & LANDSIDE OFS	5
	2-111-010035	BOTTOM, LH SUPERCHIEF STYLE W/18" CUT, & 2 PC LANDSIDE	1
	2-111-010036	BOTTOM, RH SUPERCHIEF STYLE W/18" CUT, 2 PC LANDSIDE	1
2	***	STANDARD TO MOLDBOARD BRACE	1
	7/16-14X1-1/2PW	PLOW BOLT, 7/16-14 X 1-1/2", #3 HD, GR5 (FOR MOLDBOARD)	1
	7/16-14HFLN	NUT, LOCK, 7/16-14 (FOR MOLDBOARD)	1
	5/8-14X3-1/2PB	PLOW BOLT, 5/8-14 X 3-1/2", #3 HD, GR5 (FOR LANDSIDE)	1
	5/8SLW	LOCKWASHER, 5/8" (FOR LANDSIDE)	1
	5/8-11HFN	NUT, 5/8-11 (FOR LANDSIDE)	1
3(L/R)	2-744-010031-5	MOLDBOARD-TO-SHARE STRAP	1
4(L)	2-439-010003-7	SHIN LH, SUPERCHIEF, STRAIGHT & LONG LANDSIDE	1
4(R)	2-439-010003-8	SHIN RH, SUPERCHIEF, STRAIGHT & LONG LANDSIDE (NOT SHOWN)	1
	7/16-14X1-1/4PB	PLOW BOLT, 7/16-14 X 1-1/4" #3 HD, GR5	2
	7/16-14HFN	NUT, 7/16-14	2
	7/16FW	WASHER, 7/16" USS	2
8(L)	2-483-010003-7	MOLDBD LH, SUPERCHIEF, STRAIGHT & LONG LANDSIDE	1
8(R)	2-483-010003-8	MOLDBD RH, SUPERCHIEF, STRAIGHT & LONG LANDSIDE (NOT SHOWN)	1
	7/16-14X1-1/4PB	PLOW BOLT, 7/16" X 1-1/4", #3 HD, GR5	4
	7/16FW	WASHER, 7/16" USS	4
	7/16-14HFN	NUT, 7/16-14	4
14(L)	2-663-010008-7	SHARE, LH, SUPERCHIEF, STRAIGHT & LONG LANDSIDE	1
14(R)	2-663-010008-8	SHARE, RH, SUPERCHIEF, STRAIGHT & LONG LANDSIDE (NOT SHOWN)	1
	7/16-14X1-1/4LH	PLOW BOLT, LH, 7/16-14 X 1-1/4", #3 HD, GR5	5
	7/16-14LHFN	NUT, LH 7/16-14	5
	7/16FW	WASHER, 7/16" USS	5
18(L)	2-439-010009-21	LANDSLIDE LH, SUPER CHIEF, STRAIGHT	1
	2-439-010009-24	LANDSLIDE LH, SUPER CHIEF, LONG	1
18(R)	2-439-010009-22	LANDSLIDE RH, SUPER CHIEF, STRAIGHT (NOT SHOWN)	1
	2-439-010009-26	LANDSLIDE RH, SUPER CHIEF, LONG (NOT SHOWN)	1
	7/16-14X1-3/4PB	PLOW BOLT, 7/16-14 X 1-3/4", #3 HD, GR5	1*
	7/16-14X2-1/2PB	PLOW BOLT, 7/16-14 X 2-1/2", #3 HD, GR5	1
	7/16-14X1-1/4PB	PLOW BOLT, 7/16-14 X 1-1/4", #3 HD, GR5	1
	7/16FW	WASHER, 7/16" USS	3*
	7/16-14HFN	NUT, 7/16-14	3*
27(L)	2-313-010003-7	STANDARD, LH, SUPERCHIEF, STRAIGHT & LONG LSLIDE	1
27(R)	2-313-010003-8	STANDARD, RH, SUPERCHIEF, STRAIGHT & LONG LSLIDE (NOT SHOWN)	1
28(L)	2-439-010009-23	HEEL, LH, SUPERCHIEF	1
28(R)	2-439-010003-25	HEEL, RH, SUPERCHIEF (NOT SHOWN)	1
<b>TRASHBOARD OPTION**</b>			
29(L)	2-222-010099-14	TRASHBD, LH, SUPERCHIEF, STRAIGHT & LONG LANDSIDE	1
29(R)	2-222-010099-16	TRASHBD, RH, SUPERCHIEF, STRAIGHT & LONG LANDSIDE (NOT SHOWN)	1
	7/16-14X1-1/4PB	PLOW BOLT, 7/16-14 X 1-1/4", #3 HD, GR5	2
	7/16-14HFN	NUT, 7/16-14	2
	7/16FW	WASHER, 7/16" USS	2
33(L)	2-222-010099-13	TRASHBD BRKT, LH, SUPERCHIEF, STRAIGHT & LONG LANDSIDE	1
33(R)	2-222-010099-15	TRASHBD BRKT, RH, SUPERCHIEF, STRAIGHT & LONG LANDSIDE (NOT SHOWN)	1
<b>ACCESSORIES FOR SHANK ATTACHMENT</b>			
	5/8-11X3HHCS	CAP SCREW, HEX HD 5/8-11 X 3"	1
	5/8-11X3PLW	BOLT, PLOW 5/8-11 X 3"	2
	5/8-11HFLN	LOCKNUT	3
	5/8FW	WASHER, FLAT	3

\* ADD 2 OF EACH ITEM FOR LONG LANDSIDE FOR HEEL.

\*\* TRASHBOARD BRACKET ATTACHES TO LANDSIDE SIDE OF STANDARD.

\*\*\* PART NOT SOLD SEPARATELY.

ILLUSTRATED PARTS LIST

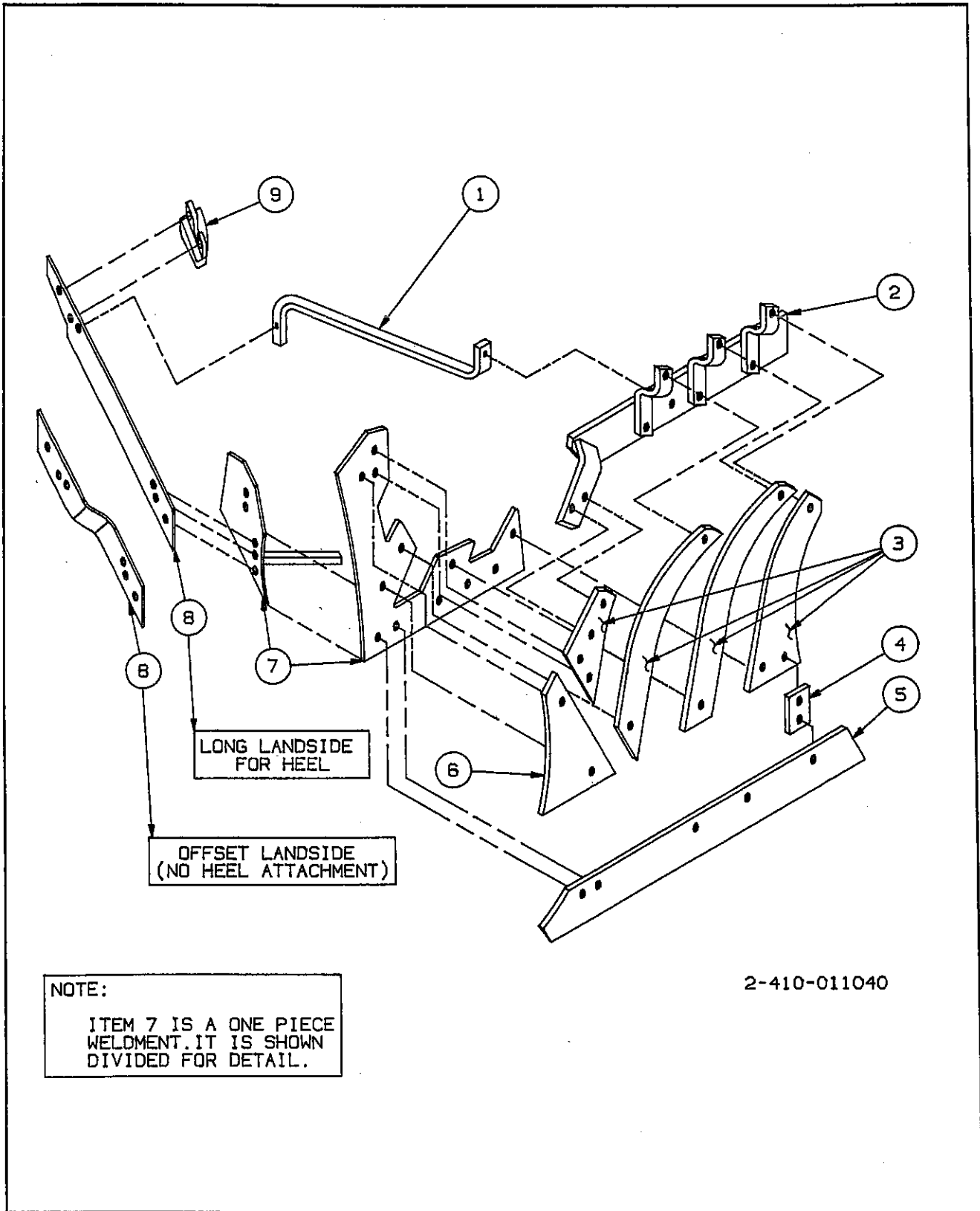


Figure 8-12 18" Slat Straight Bottom Option

## PLOW BOTTOM: 18" SLAT STRAIGHT

ITEM NO.	PART NO.	DESCRIPTION	QTY/ BOTTOM
	2-111-010017	BOTTOM, LH 18" SLAT CUT W/LANDSIDE OFFSET .....	5
	2-111-010018	BOTTOM, RH 18" SLAT CUT W/LANDSIDE OFFSET .....	5
	2-111-010019	BOTTOM, LH 18" LONG SLAT CUT, ADJ HEEL .....	1
	2-111-010020	BOTTOM, RH 18" LONG SLAT CUT, ADJ HEEL .....	1
1	**	STANDARD TO MOLDBOARD BRACE .....	1
	5/8-14X3-1/2PB	PLOW BOLT, 5/8-149 X 3-1/2", #3 HD, GR5 .....	1
	5/8SLW	LOCKWASHER, 5/8" .....	1
	5/8-11HFN	NUT, 5/8-11 .....	1
2	**	MOLDBOARD - UPPER STRAP WLDMT .....	1
3(L)	2-483-010003-9	MOLDBOARD, LH (SET OF FOUR PARTS) .....	1
3(R)	2-483-010003-10	MOLDBOARD, RH (SET OF FOUR PARTS - NOT SHOWN) .....	1
	7/16-14X1-1/2PW	PLOW BOLT, 7/16-14 X 1-1/2", #3 HD, GR5 .....	11
	7/16FW	WASHER, 7/16" USS .....	9
	7/16-14HFN	NUT, 7/16-14 .....	9
4(L/R)	2-744-010031-5	MOLDBOARD-TO-SHARE STRAP .....	1
5(L)	2-663-010008-9	SHARE, LH .....	1
5(R)	2-663-010008-10	SHARE, RH .....	1
	7/16-14X1-1/4LH	PLOW BOLT, LH, 7/16-14 X 1-1/4", #3 HD, GR5 .....	5
	7/16-14LHFN	NUT, LH 7/16-14 .....	5
	7/16FW	WASHER, 7/16" USS .....	5
6(L)	2-439-010003-9	SHIN, LH .....	1
6(R)	2-439-010003-10	SHIN, RH .....	1
	7/16-14HFN	NUT, 7/16-14 .....	2
	7/16FW	WASHER, 7/16" USS .....	2
7(L)	2-213-010003-9	STANDARD, LH .....	1
7(R)	2-213-010003-10	STANDARD, RH .....	1
8(L)	2-439-010009-21	LANDSIDE, LH, STRAIGHT BOTTOM .....	1
	2-439-010009-24	LANDSIDE, LH, LONG LANDSIDE FOR HEEL .....	1
8(R)	2-439-010009-22	LANDSIDE, RH, STRAIGHT BOTTOM .....	1
	2-439-010009-26	LANDSIDE, RH, LONG LANDSIDE FOR HEEL .....	1
	7/16-14X1-3/4PB	PLOW BOLT, 7/16-14 X 1-3/4", #3 HD, GR5 .....	1*
	7/16-14X2-1/2PB	PLOW BOLT, 7/16-14 X 2-1/2", #3 HD, GR5 .....	1
	7/16-14X2PB	PLOW BOLT, 7/16-14 X 2", #3 HD, GR5 .....	1
	7/16FW	WASHER, 7/16" USS .....	.3*
	7/16-14HFN	NUT, 7/16-14 .....	.3*
9(L)	2-439-010009-23	HEEL, LH, FOR LONG LANDSIDE ONLY .....	1
9(R)	2-439-010009-25	HEEL, RH, FOR LONG LANDSIDE ONLY .....	1

### ACCESSORIES FOR SHANK ATTACHMENT

5/8-11X3HHCS	CAP SCREW, HEX HD 5/8-11 X 3" .....	1
5/8-11X3PLW	BOLT, PLOW 5/8-11 X 3" .....	2
5/8-11HFLN	LOCKNUT .....	3
5/8FW	WASHER, FLAT .....	3

\* ADD 2 OF EACH ITEM FOR LONG LANDSIDE FOR HEEL.

\*\* PART NOT SOLD SEPARATELY.

ILLUSTRATED PARTS LIST

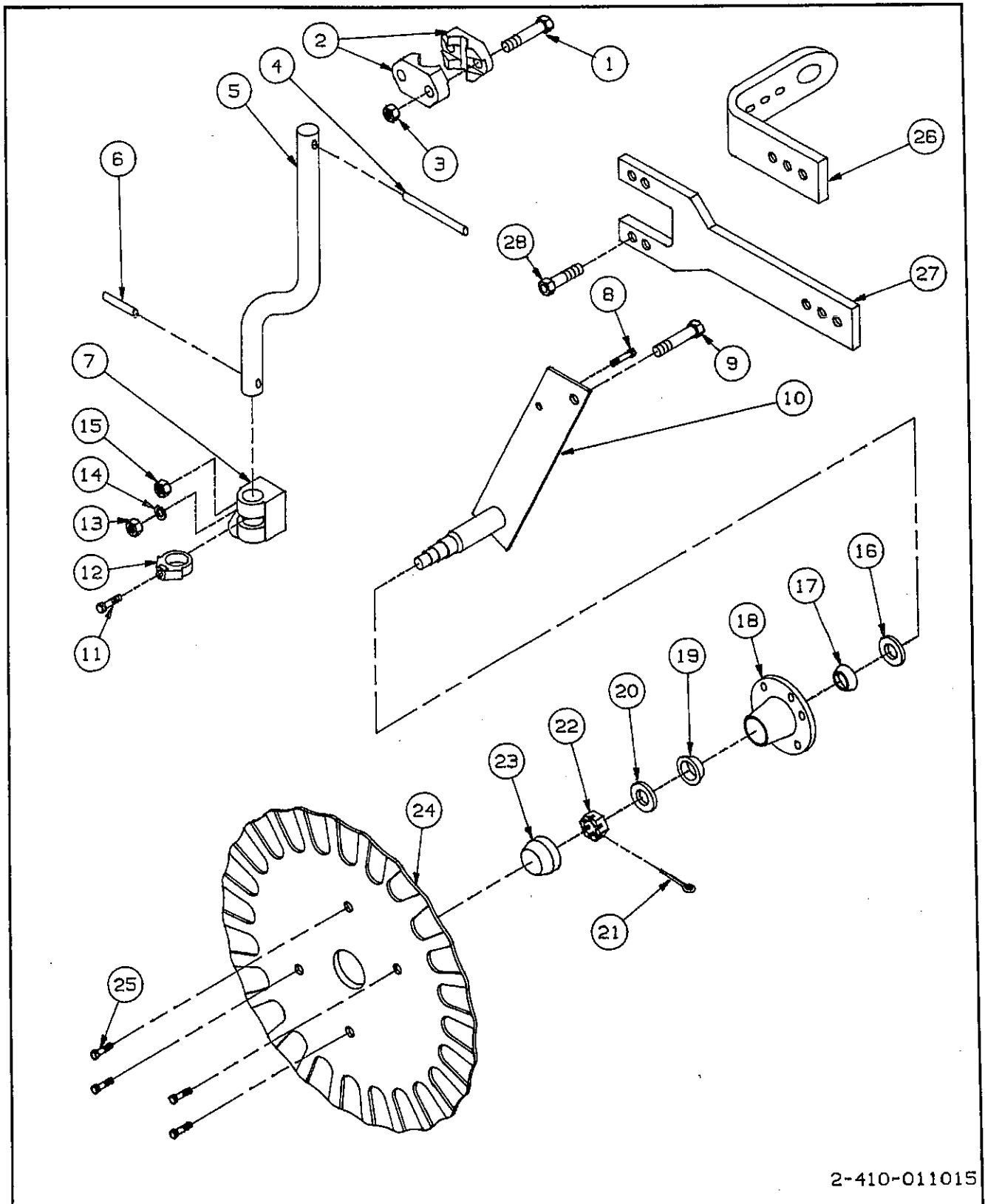


Figure 8-12 Coultter Assembly

## COULTER ASSEMBLY

ITEM NO.	PART NO.	DESCRIPTION	QTY./ COULTER
1	5/8-11X3-1/2CS	CAP SCREW, HEX HD GR5	A/R*
	5/8-11X4-1/2CS	CAP SCREW, HEX HD 5/8"-11 X 4-1/2" GR5	A/R
2	2-181-010037	CLAMP, COULTER SHANK	2
3	5/8-11HFN	NUT, GR2	A/R
4	0600-375-04000	PIN, ROLL	1
5	2-683-010094	SHANK, OFFSET COULTER 4"	1
6	0600-375-02000	PIN, ROLL	1
7	2-482-010302	MOUNT, COULTER ARM	1
8	7/16-14X1-3/4	CAP SCREW, HEX HD GR2	1
9	5/8-11X1-3/4CS	CAP SCREW, HEX HD GR5	1
10	2-027-010057	ARM WLDMT, COULTER	1
11	1-654-010080-2	SET SCREW, SQ HD W/CUP 1/2" X 1-1/4"	1
12	2-193-010004	COLLAR, COULTER STOP	1
13	7/16-14HFN	NUT	1
14	7/16SLW	WASHER, SPLIT LOCK	1
15	5/8-11HFLN	NUT, HEX LOCK GRB	1
16	1-659-010003	SEAL, GREASE 1-1/2" I.D.	1
17	1-076-010007	CONE, INNER	1
	1-076-010010	CUP, INNER	1
18	2-406-010007	HUB, 4-BOLT W/BEARING CUPS	1
19	1-076-010008	CONE, OUTER 4-BOLT HUB	1
	1-076-010011	CUP, OUTER	1
20	1-861-010003	WASHER, SPINDLE 3/4"	1
21	5/32X1-1/4	PIN, COTTER	1
22	3/4-16HSN	NUT, SLOTTED HEX	1
23	1-161-010004	HUB CAP, 4-BOLT	1
24	2-217-010146	BLADE, RIPPLED COULTER 20"	1
25	1/2-20X1HHCS	CAP SCREW, HEX HD 1/2"-20 X 1"	4
<b>*IN-FURROW COULTER ASSY ONLY</b>			
1	5/8-11X4HHCS	CAP SCREW, HEX HD GR5	A/R
	5/8-11X6-1/2CS	CAP SCREW, HEX HD GR5	A/R
<b>*ON-LAND COULTER ASSY ONLY</b>			
1	5/8-11X7HHCS	CAP SCREW, HEX HD GR5	A/R
	5/8-11X4-1/2CS	CAP SCREW, HEX HD GR5	A/R
26	2-014-010134	ANCHOR, COULTER, CYLINDER (MODEL 8800 OL)	1
	2-014-010135	ANCHOR, COULTER, CYLINDER (MODEL 8900-OL)	1
27	2-482-010303	MOUNT, FIRST BOTTOM COULTER	1
28	3/4-10X5HHCS	CAP SCREW, HEX HD GR5	4

**NOTES:**

---